

## Recombinant Human PPP1R1A Protein (His Tag)

Catalog Number: PKSH032968

**Note:** Centrifuge before opening to ensure complete recovery of vial contents.

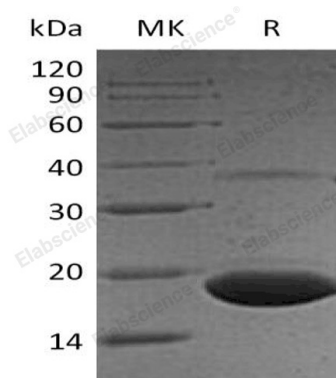
### Description

Species	Human
Source	E.coli-derived Human PPP1R1A protein Met 1-Val171, with an C-terminal His
Calculated MW	20.0 kDa
Observed MW	18 kDa
Accession	AAH22470.1
Bio-activity	Not validated for activity

### Properties

Purity	> 90 % as determined by reducing SDS-PAGE.
Concentration	Subject to label value.
Endotoxin	< 1.0 EU per µg of the protein as determined by the LAL method.
Storage	Store at < -20°C, stable for 6 months. Please minimize freeze-thaw cycles.
Shipping	This product is provided as liquid. It is shipped at frozen temperature with blue ice/gel packs. Upon receipt, store it immediately at < - 20°C.
Formulation	Supplied as a 0.2 µm filtered solution of 20mM Tris-HCl, 150mM NaCl, 1mM DTT, 50% Glycerol, pH 8.5.

### Data



> 90 % as determined by reducing SDS-PAGE.

### Background

Protein Phosphatase 1 Regulatory Subunit 1A (PPP1R1A) is an inhibitor of protein-phosphatase 1. PPP1R1A is a cellular regulator of eIF2 alpha phosphorylation. In hormonal control of glycogen metabolism, IPP-1 protein plays important function. Hormones can elevate intracellular cAMP level and elevate IPP-1 activity. PPP1R1A activation caused cAMP increase, cAMP control over proteins that are not directly phosphorylated by PKA following a rise in intracellular calcium. IPP-1 is inactivated by calcineurin (PP2B). Multiple domains in IPP-1 target cellular PP1 complexes.