

## Recombinant Human eIF4E protein (GST,His Tag)

Catalog Number: PDEH101060

**Note:** Centrifuge before opening to ensure complete recovery of vial contents.

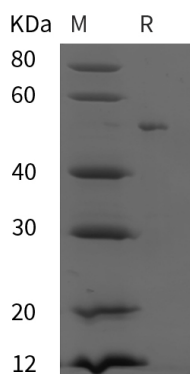
### Description

Species	Human
Source	E.coli-derived Human eIF4E protein Ala2-Val217, with an N-terminal GST & C-terminal His
Calculated MW	48.7 kDa
Observed MW	52 kDa
Accession	P06730
Bio-activity	Not validated for activity

### Properties

Purity	> 95% as determined by reducing SDS-PAGE.
Endotoxin	< 10 EU/mg of the protein as determined by the LAL method
Storage	Generally, lyophilized proteins are stable for up to 12 months when stored at -20 to -80 °C. Reconstituted protein solution can be stored at 4-8°C for 2-7 days. Aliquots of reconstituted samples are stable at < -20°C for 3 months.
Shipping	This product is provided as lyophilized powder which is shipped with ice packs.
Formulation	Lyophilized from a 0.2 µm filtered solution in PBS with 5% Trehalose and 5% Mannitol.
Reconstitution	It is recommended that sterile water be added to the vial to prepare a stock solution of 0.5 mg/mL. Concentration is measured by UV-Vis.

### Data



> 95 % as determined by reducing SDS-PAGE.

### Background

Eukaryotic translation initiation factor 4E is a 217 amino acids protein that belongs to the eukaryotic initiation factor 4E family. eIF4F is a multi-subunit complex, the composition of which varies with external and internal environmental conditions. It is composed of at least EIF4A, EIF4E and EIF4G1/EIF4G3. EIF4E is also known to interact with other partners. It can recognize and bind the 7-methylguanosine-containing mRNA cap during an early step in the initiation of protein synthesis and facilitates ribosome binding by inducing the unwinding of the mRNAs secondary structures.