

PPY Polyclonal Antibody

catalog number: E-AB-52056

Note: Centrifuge before opening to ensure complete recovery of vial contents.

Description

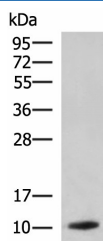
Reactivity	Human;Rat
Immunogen	Synthetic peptide of human PPY
Host	Rabbit
Isotype	IgG
Purification	Antigen affinity purification
Conjugation	Unconjugated
Buffer	Phosphate buffered solution, pH 7.4, containing 0.05% stabilizer and 50% glycerol.

Applications

Recommended Dilution

WB	1:1000-1:5000
-----------	---------------

Data



Western blot analysis of Rat pancreas tissue lysate using PPY

Polyclonal Antibody at dilution of 1:1900

Observed-MW:Refer to figures

Calculated-MW:11 kDa

Preparation & Storage

Storage	Store at -20°C Valid for 12 months. Avoid freeze / thaw cycles.
Shipping	The product is shipped with ice pack, upon receipt, store it immediately at the temperature recommended.

Background

This gene encodes a member of the neuropeptide Y (NPY) family of peptides. The encoded 95 aa preproprotein is synthesized in the pancreatic islets of Langerhans and proteolytically processed to generate two peptide products. These products include the active pancreatic hormone of 36 aa and an icosapeptide of unknown function. This hormone acts as a regulator of pancreatic and gastrointestinal functions and may be important in the regulation of food intake. Plasma level of this hormone has been shown to be reduced in conditions associated with increased food intake and elevated in anorexia nervosa. In addition, infusion of this hormone in obese rodents has shown to decrease weight gain. Alternative splicing results in multiple transcript variants, at least one of which encodes an isoform that is proteolytically processed.

For Research Use Only