

RAB38 Polyclonal Antibody

catalog number: E-AB-19172

Note: Centrifuge before opening to ensure complete recovery of vial contents.

Description

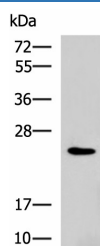
Reactivity	Human;Mouse
Immunogen	Fusion protein of human RAB38
Host	Rabbit
Isotype	IgG
Purification	Antigen affinity purification
Conjugation	Unconjugated
Buffer	Phosphate buffered solution, pH 7.4, containing 0.05% stabilizer and 50% glycerol.

Applications

Recommended Dilution

WB	1:500-1:2000
IHC	1:50-1:200

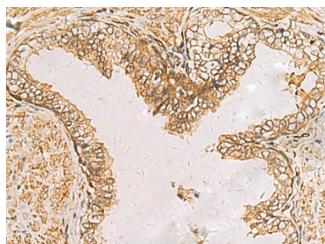
Data



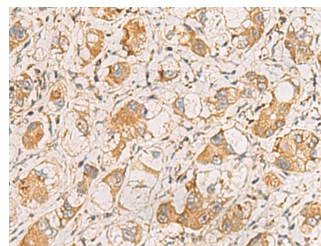
Western blot analysis of NIH/3T3 cell lysate using RAB38 Polyclonal Antibody at dilution of 1:900

Observed-MW:Refer to figures

Calculated-MW:24 kDa



Immunohistochemistry of paraffin-embedded Human prostate cancer tissue using RAB38 Polyclonal Antibody at dilution of 1:60(×200)



Immunohistochemistry of paraffin-embedded Human liver cancer tissue using RAB38 Polyclonal Antibody at dilution of 1:60(×200)

Preparation & Storage

Storage	Store at -20°C Valid for 12 months. Avoid freeze / thaw cycles.
Shipping	The product is shipped with ice pack, upon receipt, store it immediately at the temperature recommended.

Background

For Research Use Only

Ras-related protein Rab-38 is a protein that in humans is encoded by the RAB38 gene. On the basis of human genome sequence data, the RAB38 locus on chromosome 11 is flanked proximally by tyrosinase at 11q14-q21 and distally by EED at 11q14.2-q22.3 and MYO7A at 11q13.5. In melanocytic cells RAB38 gene expression may be regulated by MITF. May be involved in melanosomal transport and docking. Involved in the proper sorting of TYRP1.