

Recombinant Fibrillarin Monoclonal Antibody

catalog number: **AN301071L**

Note: Centrifuge before opening to ensure complete recovery of vial contents.

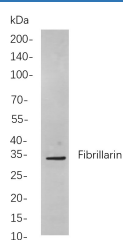
Description

Reactivity	Human;Mouse;Rat
Immunogen	Recombinant Human Fibrillarin protein
Host	Rabbit
Isotype	IgG, κ
Clone	B826
Purification	Protein A
Buffer	PBS, 50% glycerol, 0.05% Proclin 300, 0.05% protein protectant.

Applications Recommended Dilution

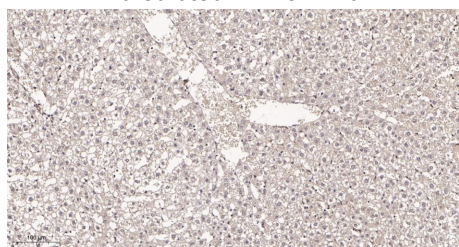
IHC	1:200-1000
WB	1:1000-5000
IF	1:200-1000
ELISA	1:5000-20000

Data

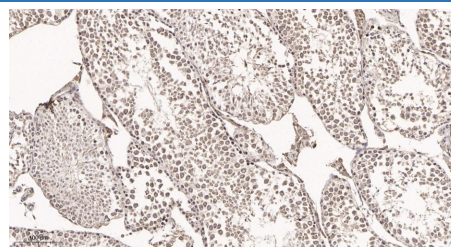


Western Blot with Recombinant Fibrillarin Monoclonal Antibody at dilution of 1:1000 dilution. Lane A: 3T3-L1 cells.

Observed-MW:34 kDa
Calculated-MW:34 kDa



Immunohistochemistry of paraffin-embedded rat liver tissue using Recombinant Fibrillarin Monoclonal Antibody at dilution of 1:200.



Immunohistochemistry of paraffin-embedded mouse testis tissue using Recombinant Fibrillarin Monoclonal Antibody at dilution of 1:200.

Preparation & Storage

Storage	Store at -20°C Valid for 12 months. Avoid freeze / thaw cycles.
Shipping	Ice bag

Background

For Research Use Only

This gene product is a component of a nucleolar small nuclear ribonucleoprotein (snRNP) particle thought to participate in the first step in processing preribosomal RNA. It is associated with the U3, U8, and U13 small nuclear RNAs and is located in the dense fibrillar component (DFC) of the nucleolus. The encoded protein contains an N-terminal repetitive domain that is rich in glycine and arginine residues, like fibrillarins in other species. Its central region resembles an RNA-binding domain and contains an RNP consensus sequence. Antisera from approximately 8% of humans with the autoimmune disease scleroderma recognize fibrillarin.

For Research Use Only

Toll-free: 1-888-852-8623
Web: www.elabscience.com

Tel: 1-832-243-6086
Email: techsupport@elabscience.com

Fax: 1-832-243-6017

Rev. V1.2