

SUMO1 Polyclonal Antibody

catalog number: E-AB-60626

Note: Centrifuge before opening to ensure complete recovery of vial contents.

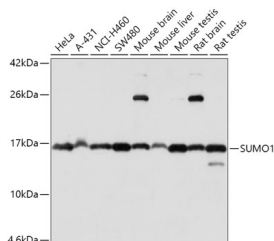
Description

Reactivity	Human;Mouse;Rat
Immunogen	Recombinant fusion protein of human SUMO1 (NP_003343.1).
Host	Rabbit
Isotype	IgG
Purification	Affinity purification
Buffer	Phosphate buffered solution, pH 7.4, containing 0.05% stabilizer and 50% glycerol.

Applications Recommended Dilution

WB	1:500-1:2000
IHC	1:50-1:100
IF	1:50-1:200

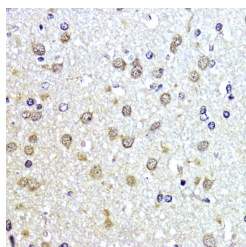
Data



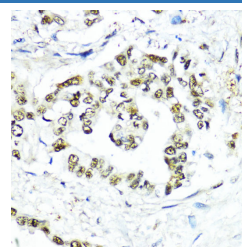
Western blot analysis of extracts of various cell lines using SUMO1 Polyclonal Antibody at dilution of 1:1000.

Observed-MV:90 kDa

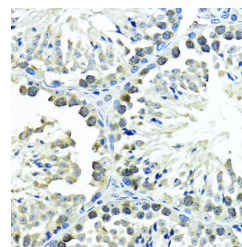
Calculated-MV:8 kDa/11 kDa



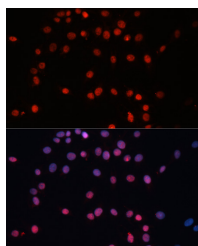
Immunohistochemistry of paraffin-embedded Rat brain using SUMO1 Polyclonal Antibody at dilution of 1:200 (40x lens).



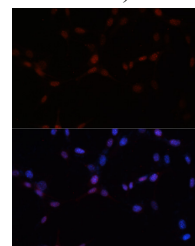
Immunohistochemistry of paraffin-embedded Human lung cancer using SUMO1 Polyclonal Antibody at dilution of 1:200 (40x lens).



Immunohistochemistry of paraffin-embedded Mouse testis using SUMO1 Polyclonal Antibody at dilution of 1:200 (40x lens).

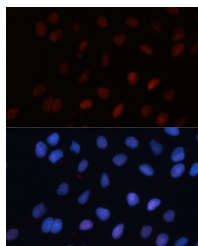


Immunofluorescence analysis of C6 cells using SUMO1 Polyclonal Antibody at dilution of 1:100. Blue: DAPI for nuclear staining.



Immunofluorescence analysis of NIH-3T3 cells using SUMO1 Polyclonal Antibody at dilution of 1:100. Blue: DAPI for nuclear staining.

For Research Use Only



Immunofluorescence analysis of U-2 OS cells using SUMO1

Polyclonal Antibody at dilution of 1:100. Blue: DAPI for nuclear staining.

Preparation & Storage

Storage

Store at -20°C Valid for 12 months. Avoid freeze / thaw cycles.

Shipping

The product is shipped with ice pack, upon receipt, store it immediately at the temperature recommended.

Background

This gene encodes a protein that is a member of the SUMO (small ubiquitin-like modifier) protein family. It functions in a manner similar to ubiquitin in that it is bound to target proteins as part of a post-translational modification system. However, unlike ubiquitin which targets proteins for degradation, this protein is involved in a variety of cellular processes, such as nuclear transport, transcriptional regulation, apoptosis, and protein stability. It is not active until the last four amino acids of the carboxy-terminus have been cleaved off. Several pseudogenes have been reported for this gene. Alternate transcriptional splice variants encoding different isoforms have been characterized.

For Research Use Only

Toll-free: 1-888-852-8623
Web: www.elabscience.com

Tel: 1-832-243-6086
Email: techsupport@elabscience.com

Fax: 1-832-243-6017

Rev. V1.6