

## C6orf25 Polyclonal Antibody

catalog number: **E-AB-90093**

**Note:** Centrifuge before opening to ensure complete recovery of vial contents.

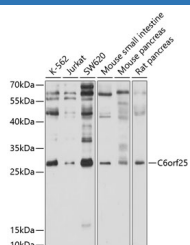
### Description

<b>Reactivity</b>	Human;Mouse;Rat
<b>Immunogen</b>	Recombinant fusion protein of human C6orf25
<b>Host</b>	Rabbit
<b>Isotype</b>	IgG
<b>Purification</b>	Affinity purification
<b>Buffer</b>	Phosphate buffered solution, pH 7.4, containing 0.05% stabilizer and 50% glycerol.

### Applications

<b>WB</b>	1:200-1:1000
-----------	--------------

### Data



Western blot analysis of extracts of various cell lines using C6orf25 Polyclonal Antibody at 1:1000 dilution.

**Observed-MW:26 kDa**

**Calculated-MW:20 kDa/21 kDa/23 kDa/24 kDa/25 kDa/26**

**kDa**

### Preparation & Storage

<b>Storage</b>	Store at -20°C Valid for 12 months. Avoid freeze / thaw cycles.
<b>Shipping</b>	The product is shipped with ice pack, upon receipt, store it immediately at the temperature recommended.

### Background

This gene is a member of the immunoglobulin (Ig) superfamily and is located in the major histocompatibility complex (MHC) class III region. The protein encoded by this gene is a glycosylated, plasma membrane-bound cell surface receptor, but soluble isoforms encoded by some transcript variants have been found in the endoplasmic reticulum and Golgi before being secreted. Multiple transcript variants encoding different isoforms have been found for this gene.

### For Research Use Only