

Recombinant Human ANPEP Protein(His Tag)

Catalog Number: PDMH100269

Note: Centrifuge before opening to ensure complete recovery of vial contents.

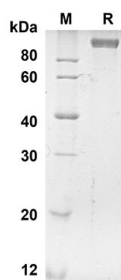
Description

Species	Human
Source	Mammalian-derived Human ANPEP protein Lys69-Lys967, with an C-terminal His
Calculated MW	98.8 kDa
Observed MW	100-120 kDa
Accession	P15144
Bio-activity	Not validated for activity

Properties

Purity	> 90% as determined by reducing SDS-PAGE.
Endotoxin	< 1.0 EU/mg of the protein as determined by the LAL method
Storage	Generally, lyophilized proteins are stable for up to 12 months when stored at -20 to -80 °C. Reconstituted protein solution can be stored at 4-8°C for 2-7 days. Aliquots of reconstituted samples are stable at < -20°C for 3 months.
Shipping	This product is provided as lyophilized powder which is shipped with ice packs.
Formulation	Lyophilized from a 0.2 µm filtered solution in PBS with 5% Trehalose and 5% Mannitol.
Reconstitution	It is recommended that sterile water be added to the vial to prepare a stock solution of 0.5 mg/mL. Concentration is measured by UV-Vis.

Data



SDS-PAGE analysis of Human ANPEP proteins, 2 µg/lane of Recombinant Human ANPEP proteins was resolved with SDS-PAGE under reducing conditions, showing bands at 98.8 KD

Background

For Research Use Only

Toll-free: 1-888-852-8623
Web: www.elabscience.com

Tel: 1-832-243-6086
Email: techsupport@elabscience.com

Fax: 1-832-243-6017

Rev. V1.7

Aminopeptidase N (ANPEP or APN), also known as CD13, is a cell-surface metalloprotease located in the small-intestinal and renal microvillar membrane, as well as other plasma membranes. It belongs to the peptidase M1 family. CD13 plays a role in the final digestion of peptides generated from hydrolysis of proteins by gastric and pancreatic proteases and is involved in the metabolism of regulatory peptides by diverse cell types. CD13/APN is a potent regulator of angiogenesis which is essential for tumor invasion and metastasis, and its transcription in activated endothelial cells is induced by angiogenic growth factors via the RAS/MAPK pathway. In addition, this enzyme has been shown to participate in antigen processing and presentation, and accordingly, defects in this gene appear to be a cause of various types of leukemia or lymphoma and carcinomas.