

# PRPF40A Polyclonal Antibody

catalog number: E-AB-53091

**Note:** Centrifuge before opening to ensure complete recovery of vial contents.

## Description

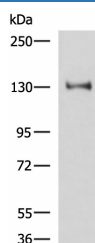
<b>Reactivity</b>	Human;Mouse
<b>Immunogen</b>	Fusion protein of human PRPF40A
<b>Host</b>	Rabbit
<b>Isotype</b>	IgG
<b>Purification</b>	Antigen affinity purification
<b>Conjugation</b>	Unconjugated
<b>buffer</b>	Phosphate buffered solution, pH 7.4, containing 0.05% stabilizer and 50% glycerol.

## Applications

## Recommended Dilution

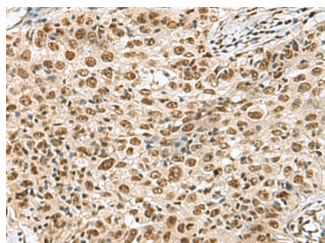
<b>WB</b>	1:500-1:2000
<b>IHC</b>	1:50-1:200

## Data

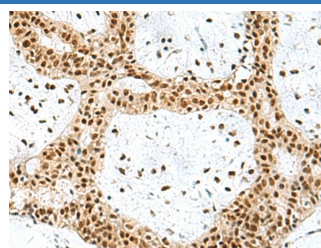


Western blot analysis of Hela cell lysate using PRPF40A Polyclonal Antibody at dilution of 1:800

**Observed-MV: Refer to figures**  
**Calculated-MV: 109 kDa**



Immunohistochemistry of paraffin-embedded Human esophagus cancer tissue using PRPF40A Polyclonal Antibody at dilution of 1:60 (x200)



Immunohistochemistry of paraffin-embedded Human breast cancer tissue using PRPF40A Polyclonal Antibody at dilution of 1:60 (x200)

## Preparation & Storage

<b>Storage</b>	Store at -20°C Valid for 12 months. Avoid freeze / thaw cycles.
<b>Shipping</b>	The product is shipped with ice pack, upon receipt, store it immediately at the temperature recommended.

## Background

Binds to WASL/N-WASP and suppresses its translocation from the nucleus to the cytoplasm, thereby inhibiting its cytoplasmic function (By similarity). Plays a role in the regulation of cell morphology and cytoskeletal organization. Required in the control of cell shape and migration. May play a role in cytokinesis. May be involved in pre-mRNA splicing.

## For Research Use Only