

# Recombinant Human TGFB1/TGF-beta 1 Protein

Catalog Number:PKSH032007



**Note:** Centrifuge before opening to ensure complete recovery of vial contents.

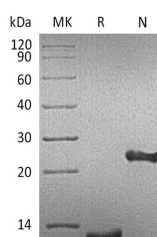
## Description

<b>Synonyms</b>	Transforming Growth Factor Beta-1;TGF-Beta-1;Latency-Associated Peptide;LAP;TGFB1;TGFB;CED;DPD1;TGF-beta 1
<b>Species</b>	Human
<b>Expression Host</b>	CHO Stable Cells
<b>Sequence</b>	Ala279-Ser390
<b>Accession</b>	P01137
<b>Calculated Molecular Weight</b>	12.8 kDa
<b>Observed molecular weight</b>	13 kDa
<b>Tag</b>	None
<b>Bioactivity</b>	Measured by its ability to inhibit the IL-4-dependent proliferation of TF-1 human erythroleukemic cells. The ED50 for this effect is 4-40 pg/ml

## Properties

<b>Purity</b>	> 95 % as determined by reducing SDS-PAGE.
<b>Endotoxin</b>	< 0.01 EU per µg of the protein as determined by the LAL method.
<b>Storage</b>	Generally, lyophilized proteins are stable for up to 12 months when stored at -20 to -80°C. Reconstituted protein solution can be stored at 4-8°C for 2-7 days. Aliquots of reconstituted samples are stable at < -20°C for 3 months.
<b>Shipping</b>	This product is provided as lyophilized powder which is shipped with ice packs.
<b>Formulation</b>	Lyophilized from a 0.2 µm filtered solution of 50mM Glycine-HCl, 150mM NaCl, pH 2.5. Normally 5 % - 8 % trehalose, mannitol and 0.01% Tween80 are added as protectants before lyophilization. Please refer to the specific buffer information in the pr
<b>Reconstitution</b>	Please refer to the printed manual for detailed information.

## Data



> 95 % as determined by reducing SDS-PAGE.

## Background

Transforming Growth Factor  $\beta$ -1 (TGF $\beta$ -1) is a secreted protein which belongs to the TGF- $\beta$  family. TGF $\beta$ -1 is abundantly expressed in bone; articular cartilage and chondrocytes and is increased in osteoarthritis (OA). TGF $\beta$ -1 performs many cellular functions; including the control of cell growth; cell proliferation; cell differentiation and apoptosis. The precursor is cleaved into a latency-associated peptide (LAP) and a mature TGF $\beta$ -1 peptide. TGF $\beta$ -1 may

## For Research Use Only

A Reliable Research Partner in Life Science and Medicine

Toll-free: 1-888-852-8623

Web: [www.elabscience.com](http://www.elabscience.com)

Tel: 1-832-243-6086

Email: [techsupport@elabscience.com](mailto:techsupport@elabscience.com)

Fax: 1-832-243-6017

# Recombinant Human TGFB1/TGF-beta 1 Protein

Catalog Number: PKSH032007



also form heterodimers with other TGF $\beta$  family members. It has been found that TGF $\beta$ -1 is frequently upregulated in tumor cells. Mutations in this gene results in Camurati-Engelmann disease.

## For Research Use Only

A Reliable Research Partner in Life Science and Medicine

Toll-free: 1-888-852-8623

Tel: 1-832-243-6086

Fax: 1-832-243-6017

Web: [www.elabscience.com](http://www.elabscience.com)

Email: [techsupport@elabscience.com](mailto:techsupport@elabscience.com)