

Recombinant Human SCF/c-Kit Ligand Protein

Catalog Number: PKSH033080

Note: Centrifuge before opening to ensure complete recovery of vial contents.

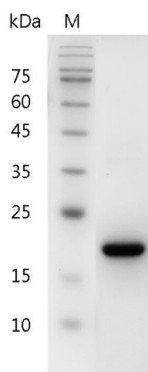
Description

Species	Human
Source	E.coli-derived Human SCF;c-Kit Ligand protein Glu26-Ala189, with an C-terminal His
Calculated MW	19.4 kDa
Observed MW	21 kDa
Accession	P21583
Bio-activity	Measure by its ability to induce TF-1 cells proliferation. The ED ₅₀ for this effect is <5 ng/mL. The specific activity of recombinant human SCF is > 5 x 10 ⁵ IU/mg.

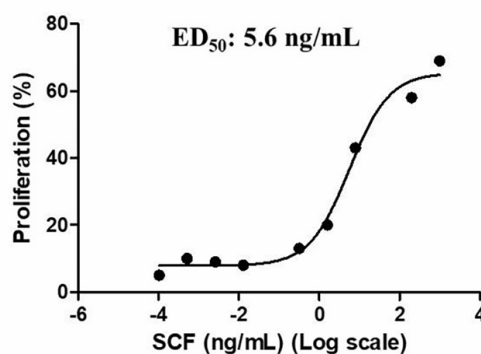
Properties

Purity	> 98 % as determined by reducing SDS-PAGE.
Endotoxin	< 0.1 EU per µg of the protein as determined by the LAL method.
Storage	Generally, lyophilized proteins are stable for up to 12 months when stored at -20 to -80 °C. Reconstituted protein solution can be stored at 4-8°C for 2-7 days. Aliquots of reconstituted samples are stable at < -20°C for 3 months.
Shipping	This product is provided as lyophilized powder which is shipped with ice packs.
Formulation	Lyophilized from sterile PBS, pH 7.4. Normally 5% - 8% trehalose, mannitol and 0.01% Tween 80 are added as protectants before lyophilization. Please refer to the specific buffer information in the printed manual.
Reconstitution	Please refer to the printed manual for detailed information.

Data



> 98 % as determined by reducing SDS-PAGE.



Measure by its ability to induce TF-1 cells proliferation. The ED₅₀ for this effect is <5 ng/mL. The specific activity of recombinant human SCF is > 5 x 10⁵ IU/mg.

Background

Stem Cell Factor (SCF) is a hematopoietic growth factor that exerts its activity at the early stages of hematopoiesis. SCF stimulates the proliferation of myeloid; erythroid; and lymphoid progenitors in bone marrow cultures and has been shown to act synergistically with colony stimulating factors.

For Research Use Only