

Recombinant Human MMP8/CLG1 Protein (His Tag)

Catalog Number: PKSH031731

Note: Centrifuge before opening to ensure complete recovery of vial contents.

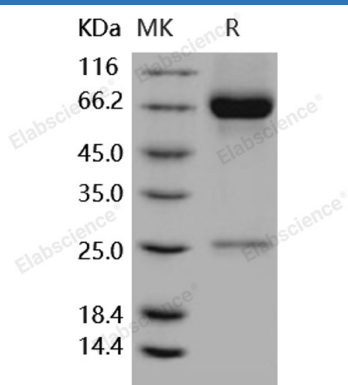
Description

Species	Human
Source	HEK293 Cells-derived Human MMP8/CLG1 protein Met 1-Gly 467, with an C-terminal His
Calculated MW	52.6 kDa
Observed MW	65-75 kDa
Accession	NP_002415.1
Bio-activity	Measured by its ability to cleave the fluorogenic peptide substrate, Mca-PLGL-Dpa-AR-NH2 (AnaSpec, Catalog#27076). The specific activity is > 250 pmoles/min/μg. (Activation description: The proenzyme needs to be activated by APMA for an activated form)

Properties

Purity	> 90 % as determined by reducing SDS-PAGE.
Endotoxin	< 1.0 EU per μg of the protein as determined by the LAL method.
Storage	Generally, lyophilized proteins are stable for up to 12 months when stored at -20 to -80 °C. Reconstituted protein solution can be stored at 4-8°C for 2-7 days. Aliquots of reconstituted samples are stable at < -20°C for 3 months.
Shipping	This product is provided as lyophilized powder which is shipped with ice packs.
Formulation	Lyophilized from sterile 50mM Tris, 10mM CaCl2, 150mM NaCl, pH 7.5 Normally 5% - 8% trehalose, mannitol and 0.01% Tween 80 are added as protectants before lyophilization.
Reconstitution	Please refer to the specific buffer information in the printed manual. Please refer to the printed manual for detailed information.

Data



> 90 % as determined by reducing SDS-PAGE.

Background

For Research Use Only

Toll-free: 1-888-852-8623
Web: www.elabscience.com

Tel: 1-832-243-6086
Email: techsupport@elabscience.com

Fax: 1-832-243-6017

Rev. V3.5

Matrix metalloproteinases (MMPs) are a family of zinc-dependent endopeptidases that degrade components of the extracellular matrix (ECM) and play essential roles in various physiological processes such as morphogenesis, differentiation, angiogenesis and tissue remodeling, as well as pathological processes including inflammation, arthritis, cardiovascular diseases, pulmonary diseases and tumor invasion. Neutrophil collagenase, also known as Matrix metalloproteinase-8, MMP-8, and CLG1, is a member of the peptidase M10A family. MMP-8 may affect the metastatic behaviour of breast cancer cells through protection against lymph node metastasis, underlining the importance of anti-target identification in drug development. MMP-8 in the tumour may have a protective effect against lymph node metastasis. MMP-8 may affect the metastatic behaviour of breast cancer cells through protection against lymph node metastasis, underlining the importance of anti-target identification in drug development. MMP-8 participates in wound repair by contributing to the resolution of inflammation and open the possibility to develop new strategies for treating wound healing defects.