

NPY Polyclonal Antibody

catalog number: **D-AB-10172L**

Note: Centrifuge before opening to ensure complete recovery of vial contents.

Description

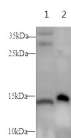
Reactivity	Mouse
Immunogen	Recombinant Human NPY protein expressed by E.coli
Host	Rabbit
Isotype	IgG
Purification	Antigen Affinity Purification
Buffer	PBS with 0.05% Proclin300, 1% protective protein and 50% glycerol, pH7.4

Applications

Recommended Dilution

WB	1:500-1:1000
-----------	--------------

Data



Western blot with NPY Polyclonal antibody at dilution of 1:500.lane 1:Mouse brain,lane 2:Mouse spleen

Observed-MW:14 kDa

Calculated-MW:11 kDa

Preparation & Storage

Storage	Store at -20°C Valid for 12 months. Avoid freeze / thaw cycles.
Shipping	The product is shipped with ice pack,upon receipt,store it immediately at the temperature recommended.

Background

NPY is implicated in the control of feeding and in secretion of gonadotrophin-release hormone.

For Research Use Only