

Purified Anti-Human CD235 Antibody[HIR2]

catalog number: E-AB-F1080A

Note: Centrifuge before opening to ensure complete recovery of vial contents.

Description

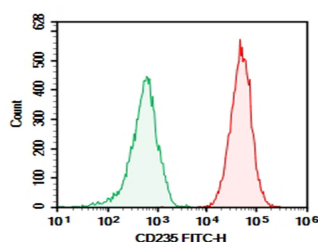
Reactivity	Human
Host	Mouse
Isotype	Mouse IgG2b, κ
Clone	HIR2
Conjugation	Unconjugated
buffer	PBS, pH 7.2. Contains 0.05% proclin 300.

Applications

Recommended Dilution

FCM	2 $\mu\text{g}/\text{mL}$ (1×10^5 - 5×10^5 cells)
------------	----------------------------------------------------------------------

Data



Human peripheral blood red blood cells were stained with 0.2 μg Purified Anti-Human CD235 Antibody[HIR2] (Right) and 0.2 μg Mouse IgG2b, κ Isotype Control (Left), followed by FITC-conjugated Goat Anti-Mouse IgG Secondary Antibody.

Preparation & Storage

Storage	Store at 4°C valid for 12 months or -20°C valid for long term storage, avoid freeze / thaw cycles.
Shipping	Ice bag

Background

The HIR2 antibody reacts with a common epitope of glycoprotein A (CD235a) and glycoprotein B (CD235b). Glycoprotein A is the major sialoglycoprotein expressed on red blood cell membrane, and erythroid precursors. Glycoprotein A shares strong homology with glycoprotein B. The HIR2 antibody recognizes human RBCs and erythroid precursors and is useful in erythroid cell development studies. Mature, non-nucleated red blood cells are characteristically glycoprotein A positive, but CD45 and CD71 negative.

For Research Use Only