

# Recombinant Human Placental Alkaline Phosphatase 1/ALPP Protein (His Tag)



Catalog Number:PKSH032058

**Note:** Centrifuge before opening to ensure complete recovery of vial contents.

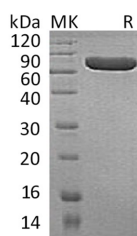
## Description

<b>Synonyms</b>	Alkaline phosphatase;placental type;Alkaline phosphatase Regan isozyme;Placental alkaline phosphatase 1;ALPP and PLAP;
<b>Species</b>	Human
<b>Expression Host</b>	HEK293 Cells
<b>Sequence</b>	Ile23-Asp506
<b>Accession</b>	P05187
<b>Calculated Molecular Weight</b>	53.7 kDa
<b>Observed molecular weight</b>	60-85 kDa
<b>Tag</b>	C-His

## Properties

<b>Purity</b>	> 95 % as determined by reducing SDS-PAGE.
<b>Endotoxin</b>	< 1.0 EU per µg of the protein as determined by the LAL method.
<b>Storage</b>	Store at < -20°C, stable for 6 months. Please minimize freeze-thaw cycles.
<b>Shipping</b>	This product is provided as liquid. It is shipped at frozen temperature with blue ice/gel packs. Upon receipt, store it immediately at < - 20°C.
<b>Formulation</b>	Supplied as a 0.2 µm filtered solution of 20mM Tris-HCl, 150mM NaCl, 0.2mM CaCl <sub>2</sub> , 10% Glycerol, pH 7.5.
<b>Reconstitution</b>	Not Applicable

## Data



> 95 % as determined by reducing SDS-PAGE.

## Background

ALPP is a membrane protein and exists as a homodimer. ALPP is expressed only in normal term placenta, endocervix and fallopian tube and also in ovarian and proximal gastrointestinal tumors. It has been shown to play a role in a number of processes including cell signaling, long-term potentiation, and cell adhesion, however, the best known and most commonly studied role is implicated in Alzheimer's research.

## For Research Use Only

A Reliable Research Partner in Life Science and Medicine

Toll-free: 1-888-852-8623

Web: [www.elabscience.com](http://www.elabscience.com)

Tel: 1-832-243-6086

Email: [techsupport@elabscience.com](mailto:techsupport@elabscience.com)

Fax: 1-832-243-6017