

KIAA1524 Polyclonal Antibody

Catalog Number: E-AB-14875



Note: Centrifuge before opening to ensure complete recovery of vial contents.

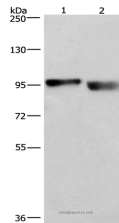
Description

Reactivity	Human, Mouse
Immunogen	Recombinant protein of human KIAA1524
Host	Rabbit
Isotype	IgG
Purification	Affinity purification
Conjugation	Unconjugated
Formulation	PBS with 0.05% sodium azide and 50% glycerol, PH7.4

Applications Recommended Dilution

WB	1:500-1:2000
-----------	--------------

Data



Western Blot analysis of A431 and Iovo cell using KIAA1524 Polyclonal Antibody at dilution of 1:597
Calculated Mw: 102kDa

Preparation & Storage

Storage Store at -20°C. Avoid freeze / thaw cycles.

Background

Protein CIP2A also known as cancerous inhibitor of PP2A (CIP2A) is a protein that in humans is encoded by the KIAA1524 gene. Protein phosphatase 2A (PP2A) is a cellular tumor suppressor which inhibits cell proliferation and transformation of normal cells to malignant cancer cells. Inhibition of PP2A activity is a prerequisite for human cell transformation. However, the in vivo mechanisms by which PP2A activity is inhibited in spontaneously transformed human cancer cells have been unclear.

For Research Use Only

A Reliable Research Partner in Life Science and Medicine

Toll-free: 1-888-852-8623

Web: www.elabscience.com

Tel: 1-832-243-6086

Email: techsupport@elabscience.com

Fax: 1-832-243-6017