

**Note:** Centrifuge before opening to ensure complete recovery of vial contents.

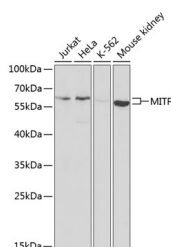
## Description

|                     |   |
|---------------------|---|
| <b>Reactivity</b>   | Human, Mouse  |
| <b>Immunogen</b>    | Recombinant fusion protein of human MITF (NP_937801.1). |
| <b>Host</b>         | Rabbit  |
| <b>Isotype</b>      | IgG   |
| <b>Purification</b> | Affinity purification                                   |
| <b>Conjugation</b>  | Unconjugated  |
| <b>Formulation</b>  | PBS with 0.02% sodium azide, 50% glycerol, pH7.3.       |

## Applications Recommended Dilution

|           |              |
|-----------|--------------|
| <b>WB</b> | 1:500-1:2000 |
|-----------|--------------|

## Data



Western blot analysis of extracts of various cell lines using MITF Polyclonal Antibody at dilution of 1:1000.

**Observed MW: 65kDa**

**Calculated Mw: 40kDa/46kDa/52kDa/55kDa/56kDa  
/57kDa/58kDa**

## Preparation & Storage

**Storage** Store at -20°C. Avoid freeze / thaw cycles.

## Background

This gene encodes a transcription factor that contains both basic helix-loop-helix and leucine zipper structural features. It regulates the differentiation and development of melanocytes retinal pigment epithelium and is also responsible for pigment cell-specific transcription of the melanogenesis enzyme genes. Heterozygous mutations in the this gene cause auditory-pigmentary syndromes, such as Waardenburg syndrome type 2 and Tietz syndrome. Alternatively spliced transcript variants encoding different isoforms have been identified.

## For Research Use Only

A Reliable Research Partner in Life Science and Medicine

Toll-free: 1-888-852-8623

Web: [www.elabscience.com](http://www.elabscience.com)

Tel: 1-832-243-6086

Email: [techsupport@elabscience.com](mailto:techsupport@elabscience.com)

Fax: 1-832-243-6017