

LDHA Polyclonal Antibody

catalog number: E-AB-18030

Note: Centrifuge before opening to ensure complete recovery of vial contents.

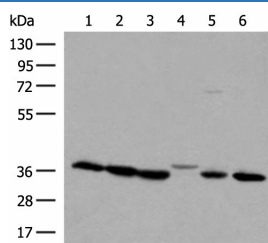
Description

Reactivity	Human;Mouse;Rat
Immunogen	Synthetic peptide of human LDHA
Host	Rabbit
Isotype	IgG
Purification	Antigen affinity purification
Conjugation	Unconjugated
buffer	Phosphate buffered solution, pH 7.4, containing 0.05% stabilizer and 50% glycerol.

Applications

Applications	Recommended Dilution
WB	1:500-1:2000
IHC	1:30-1:150

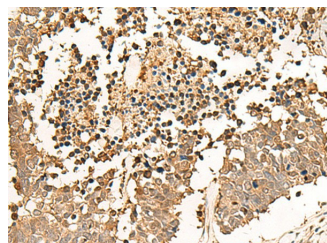
Data



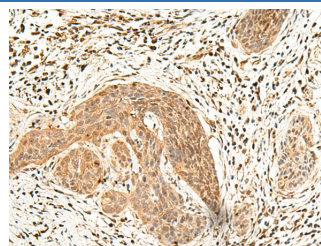
Western blot analysis of 293T and A375 cell lysates using LDHA Polyclonal Antibody at dilution of 1:250

Observed-MV: Refer to figures

Calculated-MV: 37 kDa



Immunohistochemistry of paraffin-embedded Human lung cancer tissue using LDHA Polyclonal Antibody at dilution of 1:25($\times 200$)



Immunohistochemistry of paraffin-embedded Human esophagus cancer tissue using LDHA Polyclonal Antibody at dilution of 1:25($\times 200$)

Preparation & Storage

Storage	Store at -20°C Valid for 12 months. Avoid freeze / thaw cycles.
Shipping	The product is shipped with ice pack, upon receipt, store it immediately at the temperature recommended.

Background

For Research Use Only

LDHA Polyclonal Antibody

catalog number: E-AB-18030



LDHA, also named as LDH-M and NY-REN-59, is an enzyme which catalyzes the inter-conversion of pyruvate and L-lactate with concomitant inter-conversion of NADH and NAD⁺. LDHA is found in most somatic tissues, though predominantly in muscle tissue and tumours, and belongs to the lactate dehydrogenase family. It has long been known that many human cancers have higher LDHA levels compared to normal tissues. It has also been shown that LDHA plays an important role in the development, invasion and metastasis of malignancies. Mutations in LDHA have been linked to exertional myoglobinuria. LDHA has some isoforms with MW 26-40 kDa.

For Research Use Only

A Reliable Research Partner in Life Science and Medicine
Tel: 400-999-2100

Email: techsupport@elabscience.cn

Web: www.elabscience.cn

Rev. V1.7