

# MORF4L1 Polyclonal Antibody

catalog number: E-AB-19411

**Note:** Centrifuge before opening to ensure complete recovery of vial contents.

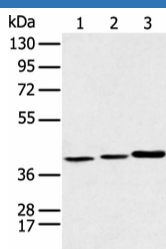
## Description

Reactivity	Human;Mouse;Rat
Immunogen	Synthetic peptide of human MORF4L1
Host	Rabbit
Isotype	IgG
Purification	Antigen affinity purification
Conjugation	Unconjugated
buffer	Phosphate buffered solution, pH 7.4, containing 0.05% stabilizer and 50% glycerol.

## Applications

WB	1:500-1:2000
IHC	1:25-1:100

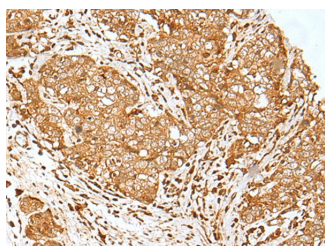
## Data



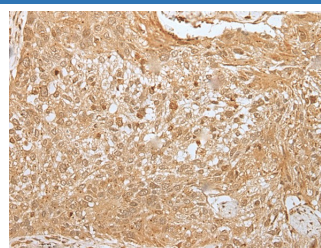
Western blot analysis of Human fetal liver tissue Hela cell and Human fetal brain tissue using MORF4L1 Polyclonal Antibody at dilution of 1:350

**Observed-MV:Refer to figures**

**Calculated-MV:41 kDa**



Immunohistochemistry of paraffin-embedded Human esophagus cancer tissue using MORF4L1 Polyclonal Antibody at dilution of 1:30(×200)



Immunohistochemistry of paraffin-embedded Human lung cancer tissue using MORF4L1 Polyclonal Antibody at dilution of 1:30(×200)

## Preparation & Storage

Storage	Store at -20°C Valid for 12 months. Avoid freeze / thaw cycles.
Shipping	The product is shipped with ice pack, upon receipt, store it immediately at the temperature recommended.

## Background

## For Research Use Only

# MORF4L1 Polyclonal Antibody

catalog number: E-AB-19411



MORF4L1 (also known as MRG15) and MORF4-related gene X (MRGX). The human MORF4 gene maps to chromosome 4q33-q34.1. MORF4 induces a senescent-like phenotype in complementation group B immortal cell lines. The genes encoding MRG15 and MRGX map to chromosomes 15q24 and Xq22, respectively. MORF4, MORF4L1 and MRGX each contain a C-terminal leucine zipper. An association between MORF4L1, Rb (retinoblastoma tumor suppressor) and PAM14 (protein associated with MORF4L1) suggests a role for MORF4L1 in transcription regulation.

## For Research Use Only

A Reliable Research Partner in Life Science and Medicine  
Tel: 400-999-2100

Email: [techsupport@elabscience.cn](mailto:techsupport@elabscience.cn)

Web: [www.elabscience.cn](http://www.elabscience.cn)

Rev. V1.7