

# Recombinant Mouse Ccl25 Protein(Sumo Tag)

Catalog Number: PDEM100127



**Note:** Centrifuge before opening to ensure complete recovery of vial contents.

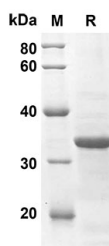
## Description

<b>Species</b>	Mouse
<b>Source</b>	E.coli-derived Mouse Ccl25 protein Gln24-Asn144aa, with an N-terminal Sumo
<b>Mol_Mass</b>	26.2 kDa
<b>Accession</b>	O35903
<b>Bio-activity</b>	Not validated for activity

## Properties

<b>Purity</b>	> 90% as determined by reducing SDS-PAGE.
<b>Endotoxin</b>	< 10 EU/mg of the protein as determined by the LAL method
<b>Storage</b>	Generally, lyophilized proteins are stable for up to 12 months when stored at -20 to -80 °C. Reconstituted protein solution can be stored at 4-8°C for 2-7 days. Aliquots of reconstituted samples are stable at < -20°C for 3 months.
<b>Shipping</b>	This product is provided as lyophilized powder which is shipped with ice packs.
<b>Formulation</b>	Lyophilized from a 0.2 µm filtered solution in PBS with 5% Trehalose and 5% Mannitol.
<b>Reconstitution</b>	It is recommended that sterile water be added to the vial to prepare a stock solution of 0.5 mg/mL. Concentration is measured by UV-Vis.

## Data



SDS-PAGE analysis of Mouse Ccl25 proteins, 2 µg/lane of Recombinant Mouse Ccl25 proteins was resolved with an SDS-PAGE under reducing conditions, showing bands at 26.2 KD

## Background

### For Research Use Only

A Reliable Research Partner in Life Science and Medicine  
Tel:400-999-2100

Email:[techsupport@elabscience.cn](mailto:techsupport@elabscience.cn)

Web:[www.elabscience.cn](http://www.elabscience.cn)

Rev. V1.6

# Recombinant Mouse Ccl25 Protein(Sumo Tag)

Catalog Number: PDEM100127



CCL25, also known as TECK (thymus-expressed chemokine), is a CC chemokine that regulates the trafficking of lymphocytes in the thymus and small intestine. Mature mouse CCL25 shares 40% and 81% amino acid sequence identity with an human and rat CCL25, respectively . CCL25 is produced by stromal cells in the thymus and epithelial cells of the small intestine, particularly the jejunum and ileum . It binds to and induces chemoattraction through CCR9 , and both human and mouse proteins act on human CCR9 . CCR9 is expressed on immature pre-T cells and thymocytes . CCL25 induces the homing of several lymphocyte populations to the small intestine , including Integrin alpha 4 beta 7+ gamma delta T cells , Integrin alpha E beta 7+ CD8+ T cells , and IgA-producing plasma cells . In cancer, functional CCR9 mediates the metastasis of melanoma cells to the small intestine , contributes to the CCL25-dependent migration and invasion of some breast carcinomas , and attracts mesenchymal stromal cells to CCL25-expressing multiple myelomas . CCL25 contributes to the severity of chronic inflammation in rheumatoid arthritis where it attracts CCR9+ monocytes and macrophages , in endometriosis where it promotes the invasiveness of stromal cells , and in atherosclerosis where it contributes to the accumulation of CCR9+ macrophages in arterial plaques .

## For Research Use Only

A Reliable Research Partner in Life Science and Medicine  
Tel:400-999-2100

Email:[techsupport@elabscience.cn](mailto:techsupport@elabscience.cn)

Web:[www.elabscience.cn](http://www.elabscience.cn)

Rev. V1.6