

DNA Ligase1 Polyclonal Antibody

Catalog Number: E-AB-14958



Note: Centrifuge before opening to ensure complete recovery of vial contents.

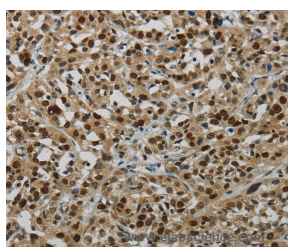
Description

| | |
|---------------------|-----------------------------------------------------|
| Reactivity | Human, Mouse, Rat |
| Immunogen | Recombinant protein of human LIG1 |
| Host | Rabbit |
| Isotype | IgG |
| Purification | Affinity purification |
| Conjugation | Unconjugated |
| Formulation | PBS with 0.05% sodium azide and 50% glycerol, PH7.4 |

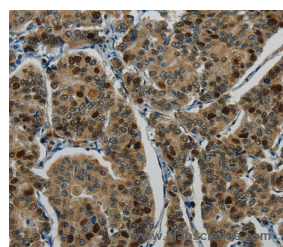
Applications Recommended Dilution

| | |
|------------|-------------|
| IHC | 1:100-1:300 |
|------------|-------------|

Data



Immunohistochemistry of paraffin-embedded Human esophagus cancer tissue using DNA Ligase1 Polyclonal Antibody at dilution 1:70



Immunohistochemistry of paraffin-embedded Human breast cancer tissue using DNA Ligase1 Polyclonal Antibody at dilution 1:70

Preparation & Storage

Storage Store at -20°C. Avoid freeze / thaw cycles.

Background

This gene encodes a member of the ATP-dependent DNA ligase protein family. The encoded protein functions in DNA replication, recombination, and the base excision repair process. Mutations in this gene that lead to DNA ligase I deficiency result in immunodeficiency and increased sensitivity to DNA-damaging agents. Disruption of this gene may also be associated with a variety of cancers. Alternative splicing results in multiple transcript variants.

For Research Use Only

A Reliable Research Partner in Life Science and Medicine

Toll-free: 1-888-852-8623

Web: www.elabscience.com

Tel: 1-832-243-6086

Email: techsupport@elabscience.com

Fax: 1-832-243-6017