

## Recombinant Human Cyclophilin A Protein

**Catalog Number:** PKSH033420

**Note:** Centrifuge before opening to ensure complete recovery of vial contents.

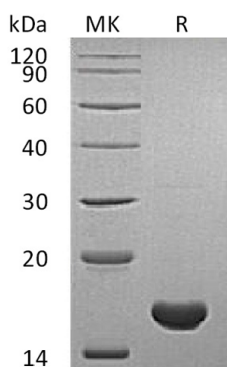
### Description

<b>Species</b>	Human
<b>Source</b>	E.coli-derived Human Cyclophilin A protein Met 1-Glu165
<b>Calculated MW</b>	18.0 kDa
<b>Observed MW</b>	16 kDa
<b>Accession</b>	P62937
<b>Bio-activity</b>	Not validated for activity

### Properties

<b>Purity</b>	> 95 % as determined by reducing SDS-PAGE.
<b>Concentration</b>	Subject to label value.
<b>Endotoxin</b>	< 1.0 EU per µg of the protein as determined by the LAL method.
<b>Storage</b>	Store at < -20°C, stable for 6 months. Please minimize freeze-thaw cycles.
<b>Shipping</b>	This product is provided as liquid. It is shipped at frozen temperature with blue ice/ gel packs. Upon receipt, store it immediately at < - 20°C.
<b>Formulation</b>	Supplied as a 0.2 µm filtered solution of PBS, 10% Glycerol, pH 7.4.

### Data



> 95 % as determined by reducing SDS-PAGE.

### Background

Peptidyl-prolyl cis-trans isomerase A is a member of the peptidyl-prolyl cis-trans isomerase (PPIase) family, which catalyzes the cis-trans isomerization of proline imidic peptide bonds. Cyclophilin A regulate many biological processes; including intracellular signaling; transcription; inflammation; and apoptosis. Cyclophilin is also incorporated into many viruses; including HIV1; where it has been speculated to be involved in functions such as viral assembly and infectivity. The immunosuppressive activity of cyclosporins has been correlated with their ability to form complexes with cyclophilins that inhibit calcineurin phosphatase activity and prevent incorporation of cyclophilin into viral particles. The cyclosporin/cyclophilin complex selectively binds and inactivates calcineurin; making it a useful inhibitor for studying calcineurin activity.

### For Research Use Only

Toll-free: 1-888-852-8623  
Web: [www.elabscience.com](http://www.elabscience.com)

Tel: 1-832-243-6086  
Email: [techsupport@elabscience.com](mailto:techsupport@elabscience.com)

Fax: 1-832-243-6017