

mTOR Polyclonal Antibody

Catalog Number: E-AB-63517

2 Publications



Note: Centrifuge before opening to ensure complete recovery of vial contents.

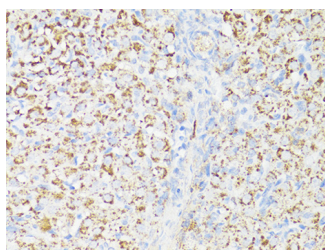
Description

Reactivity	Human, Mouse, Rat
Immunogen	Recombinant fusion protein of human mTOR (NP_004949.1).
Host	Rabbit
Isotype	IgG
Purification	Affinity purification
Conjugation	Unconjugated
Formulation	PBS with 0.02% sodium azide, 50% glycerol, pH7.3.

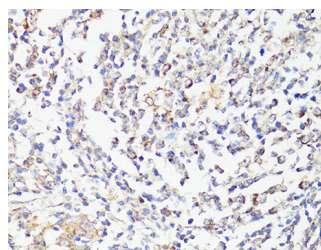
Applications Recommended Dilution

IHC	1:50-1:200
IF	1:50-1:200

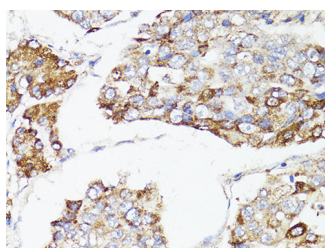
Data



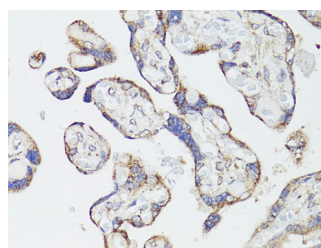
Immunohistochemistry of paraffin-embedded Rat ovary using mTOR Polyclonal Antibody at dilution of 1:150 (40x lens).



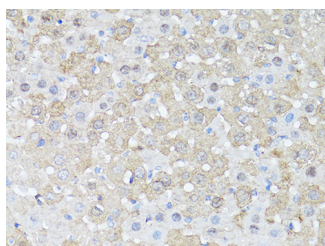
Immunohistochemistry of paraffin-embedded Human tonsil using mTOR Polyclonal Antibody at dilution of 1:150 (40x lens).



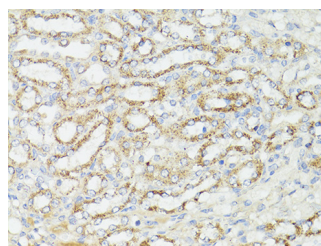
Immunohistochemistry of paraffin-embedded Human liver cancer using mTOR Polyclonal Antibody at dilution of 1:150 (40x lens).



Immunohistochemistry of paraffin-embedded Human placenta using mTOR Polyclonal Antibody at dilution of 1:150 (40x lens).



Immunohistochemistry of paraffin-embedded Mouse liver using mTOR Polyclonal Antibody at dilution of



Immunohistochemistry of paraffin-embedded Mouse kidney using mTOR Polyclonal Antibody at dilution

For Research Use Only

A Reliable Research Partner in Life Science and Medicine

Toll-free: 1-888-852-8623

Web: www.elabscience.com

Tel: 1-832-243-6086

Email: techsupport@elabscience.com

Fax: 1-832-243-6017

mTOR Polyclonal Antibody

Catalog Number: E-AB-63517

2 Publications



1:150 (40x lens).

of 1:150 (40x lens).

Preparation & Storage

Storage Store at -20°C. Avoid freeze / thaw cycles.

Background

The protein encoded by this gene belongs to a family of phosphatidylinositol kinase-related kinases. These kinases mediate cellular responses to stresses such as DNA damage and nutrient deprivation. This protein acts as the target for the cell-cycle arrest and immunosuppressive effects of the FKBP12-rapamycin complex. The ANGPTL7 gene is located in an intron of this gene.

For Research Use Only

A Reliable Research Partner in Life Science and Medicine

Toll-free: 1-888-852-8623

Web: www.elabscience.com

Tel: 1-832-243-6086

Email: techsupport@elabscience.com

Fax: 1-832-243-6017