

SKIV2L2 Polyclonal Antibody

catalog number: E-AB-61020

Note: Centrifuge before opening to ensure complete recovery of vial contents.

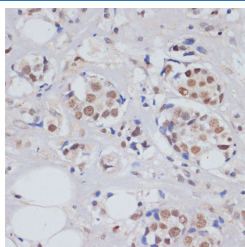
Description

Reactivity	Human;Mouse
Immunogen	Recombinant fusion protein of human SKIV2L2 (NP_056175.3).
Host	Rabbit
Isotype	IgG
Purification	Affinity purification
Buffer	Phosphate buffered solution, pH 7.4, containing 0.05% stabilizer and 50% glycerol.

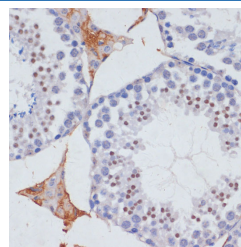
Applications

Applications	Recommended Dilution
IHC	1:50-1:200

Data



Immunohistochemistry of paraffin-embedded Human breast cancer using SKIV2L2 Polyclonal Antibody at dilution of 1:100 (40x lens).



Immunohistochemistry of paraffin-embedded Mouse testis using SKIV2L2 Polyclonal Antibody at dilution of 1:100 (40x lens).

Preparation & Storage

Storage	Store at -20°C Valid for 12 months. Avoid freeze / thaw cycles.
Shipping	The product is shipped with ice pack, upon receipt, store it immediately at the temperature recommended.

Background

MTREX (Mtr4 Exosome RNA Helicase) is a Protein Coding gene. Diseases associated with MTREX include Posterior Myocardial Infarction and Robinow Syndrome, Autosomal Dominant 1. Among its related pathways are rRNA processing in the nucleus and cytosol and Gene Expression. An important paralog of this gene is SKIV2L.

For Research Use Only