

Elab Fluor® Violet 450 Anti-Human CD20 Antibody[2H7]

Catalog Number: E-AB-F1212Q

Note: Centrifuge before opening to ensure complete recovery of vial contents.

Description

Reactivity	Human;Rhesus;Cynomolgus
Host	Mouse
Isotype	Mouse IgG2b, κ
Clone No.	2H7
Isotype Control	Elab Fluor® Violet 450 Mouse IgG2b, κ Isotype Control[MPC-11] [Product E-AB-F09812Q]
Conjugation	Elab Fluor® Violet 450
Conjugation Information	Elab Fluor® Violet 450 is designed to be excited by the violet laser (405 nm) and detected using an optical filter centered near 450 nm (e.g., a 450/45 nm bandpass filter).
Storage Buffer	Phosphate buffered solution, pH 7.2, containing 0.09% stabilizer and 1% protein protectant.

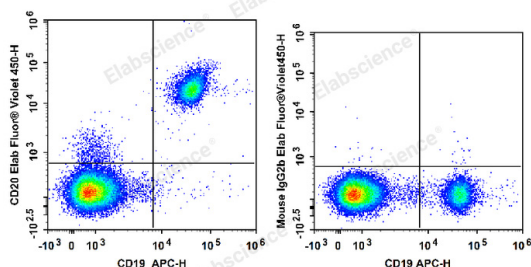
Applications

Recommended usage

FCM

Each lot of this antibody is quality control tested by flow cytometric analysis. **The amount of the reagent is suggested to be used 5 μL of antibody per test (million cells in 100 μL staining volume or per 100 μL of whole blood).** Please check your vial before the experiment. Since applications vary, the appropriate dilutions must be determined for individual use.

Data



Human peripheral blood lymphocytes are stained with APC

Anti-Human CD19 Antibody and Elab Fluor® Violet 450 Anti-Human CD20 Antibody (Left). Lymphocytes are stained with

APC Anti-Human CD19 Antibody and Elab Fluor® Violet 450 Mouse IgG2b, κ Isotype Control (Right).

Preparation & Storage

Storage	Keep as concentrated solution. This product can be stored at 2-8°C for 12 months. Please protected from prolonged exposure to light and do not freeze.
Shipping	Ice bag

Antigen Information

Alternate Names	B-lymphocyte surface antigen B1;Bp35;Leukocyte surface antigen Leu-16;MS4A1
Uniprot ID	P11836

For Research Use Only

Toll-free: 1-888-852-8623
Web: www.elabscience.com

Tel: 1-832-243-6086
Email: techsupport@elabscience.com

Fax: 1-832-243-6017

Rev. V1.7

Gene ID

931

Background

CD20 is a 33-37 kD, four transmembrane spanning protein, also known as B1 and Bp35. CD20 is expressed on pre-B-cells, resting and activated B cells (not plasma cells), some follicular dendritic cells, and at low levels on a T cell subset. CD20 is heavily phosphorylated on activated B cells and malignant B cells. Homo-oligomeric complexes of CD20 are thought to form Ca^{2+} conductive ion channels in the plasma membrane of B cells. The CD20 molecule is involved in B-cell activation and is associated with various Src family kinases (Lyn, Lck, Fyn). It exists in a complex with MHC class I and II, CD53, CD81, and CD82.