

Cys-C Polyclonal Antibody

catalog number: E-AB-40575

Note: Centrifuge before opening to ensure complete recovery of vial contents.

Description

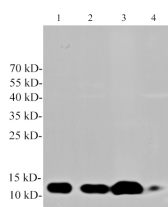
Reactivity	Human;Mouse;Rat
Immunogen	Recombinant Human Cys-C protein expressed by E.coli.
Host	Rabbit
Isotype	IgG
Purification	Antigen Affinity Purification
Conjugation	Unconjugated
buffer	PBS with 0.05% proclin 300, 1% protective protein and 50% glycerol,pH7.4

Applications

Recommended Dilution

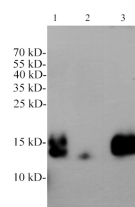
WB 1:1000-2000

Data



Western blotting with anti-Cys-C polyclonal antibody at dilution of 1:1000. Lane 1: HepG2 cell lysate, lane 2: PC-3 cell lysate, lane 3: CaCo2 cell lysate, lane 4: Mouse kidney lysate.

Observed-MV:13 kDa
Calculated-MV:13 kDa



Western blotting with anti-Cys-C polyclonal antibody at dilution of 1:1000. Lane 1: Rat kidney liver lysate, lane 2: Rat liver lysate, lane 3: Rat plasma.

Observed-MV:13 kDa
Calculated-MV:13 kDa

Preparation & Storage

Storage Store at -20°C Valid for 12 months. Avoid freeze / thaw cycles.

Shipping The product is shipped with ice pack,upon receipt,store it immediately at the temperature recommended.

Background

Cystatin C is a member of family 2 of the Cystatin superfamily . It is involved in processes such as tumor invasion and metastasis, inflammation and some neurological diseases. It inhibits many cysteine proteases such as papain and cathepsins B, H, K, L, and S.

For Research Use Only