

CD31 Polyclonal Antibody

catalog number: E-AB-70020

Note: Centrifuge before opening to ensure complete recovery of vial contents.

Description

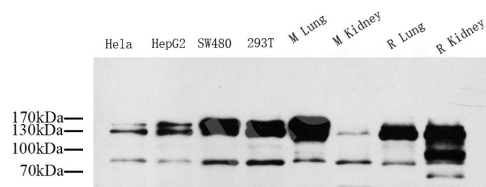
Reactivity	Human;Mouse;Rat
Immunogen	KLH conjugated Synthetic peptide corresponding to Mouse CD31
Host	Rabbit
Isotype	IgG
Purification	Affinity purification
Conjugation	Unconjugated
buffer	Phosphate buffered solution, pH 7.4, containing 0.05% stabilizer, 1% protein protectant and 50% glycerol.

Applications

WB	1:500-1:2000
-----------	--------------

Recommended Dilution

Data



Western Blot analysis of various samples using CD31

Polyclonal Antibody at dilution of 1:1000.

Observed-MV:90 /130 kDa

Calculated-MV:130 kDa

Preparation & Storage

Storage	Store at -20°C Valid for 12 months. Avoid freeze / thaw cycles.
Shipping	The product is shipped with ice pack,upon receipt,store it immediately at the temperature recommended.

Background

Platelet endothelial cell adhesion molecule-1 (PECAM-1,CD31) is a member of the immunoglobulin gene superfamily of cell adhesion molecules. It is highly expressed on the surface of the endothelium,making up a large portion of its intracellular junctions. PECAM-1 is also present on the surface of hematopoietic cells and immune cells including platelets,monocytes,neutrophils,natural killer cells,megakaryocytes and some types of T-cell . As well as its role in cell-cell adhesion,PECAM-1 functions as a signaling receptor,and is involved in important physiological events such as nitric oxide production,regulation of T-cell immunity and tolerance,leukocyte transendothelial migration and inflammation and angiogenesis .

For Research Use Only