

Recombinant AREB6 Monoclonal Antibody

catalog number: **AN301025L**

Note: Centrifuge before opening to ensure complete recovery of vial contents.

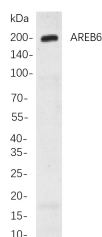
Description

Reactivity	Human;Rat
Immunogen	Recombinant Human AREB6 protein
Host	Rabbit
Isotype	IgG, κ
Clone	B776
Purification	Protein A
Buffer	PBS, 50% glycerol, 0.05% Proclin 300, 0.05% protein protectant.

Applications

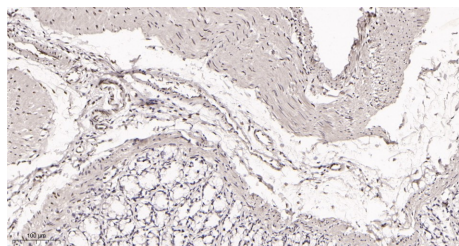
Applications	Recommended Dilution
IHC	1:200-1:500
WB	1:1000-1:5000

Data

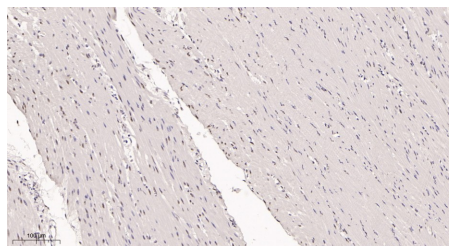


Western Blot with Recombinant AREB6 Monoclonal Antibody at dilution of 1:1000 dilution. Lane A: A459 cells.

Observed-MW:200 kDa
Calculated-MW:124 kDa



Immunohistochemistry of paraffin-embedded rat colon tissue using Recombinant AREB6 Monoclonal Antibody at dilution of 1:200.



Immunohistochemistry of paraffin-embedded human colon tissue using Recombinant AREB6 Monoclonal Antibody at dilution of 1:200.

Preparation & Storage

Storage	Store at -20°C Valid for 12 months. Avoid freeze / thaw cycles.
Shipping	Ice bag

Background

This gene encodes a zinc finger transcription factor. The encoded protein likely plays a role in transcriptional repression of interleukin 2. Mutations in this gene have been associated with posterior polymorphous corneal dystrophy-3 and late-onset Fuchs endothelial corneal dystrophy. Alternatively spliced transcript variants encoding different isoforms have been described.

For Research Use Only

Toll-free: 1-888-852-8623
Web: www.elabscience.com

Tel: 1-832-243-6086
Email: techsupport@elabscience.com

Fax: 1-832-243-6017

Rev. V1.1