

## Recombinant Human Leukocyte Ig-Like Receptor B1/ LILRB1/ILT2/CD85j (C-6His-Avi) Biotinylated

Catalog Number: PKSH034002

**Note:** Centrifuge before opening to ensure complete recovery of vial contents.

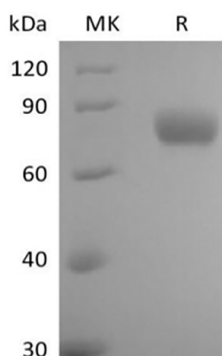
### Description

|                      |   |
|----------------------|---|
| <b>Species</b>       | Human   |
| <b>Source</b>        | HEK293 Cells-derived Human LILRB1;ILT2;CD85j protein Gly24-His458, with an C-terminal His & Avi |
| <b>Calculated MW</b> | 50.0 kDa  |
| <b>Observed MW</b>   | 70-90 kDa   |
| <b>Accession</b>     | D9IDM8  |
| <b>Bio-activity</b>  | Not validated for activity  |

### Properties

|                       |  |
|-----------------------|--|
| <b>Purity</b>         | > 95 % as determined by reducing SDS-PAGE.   |
| <b>Endotoxin</b>      | < 1.0 EU per µg of the protein as determined by the LAL method.  |
| <b>Storage</b>        | Generally, lyophilized proteins are stable for up to 12 months when stored at -20 to -80°C. Reconstituted protein solution can be stored at 4-8°C for 2-7 days. Aliquots of reconstituted samples are stable at < -20°C for 3 months.            |
| <b>Shipping</b>       | This product is provided as lyophilized powder which is shipped with ice packs.  |
| <b>Formulation</b>    | Lyophilized from a 0.2 µm filtered solution of PBS, pH 7.4.<br>Normally 5% - 8% trehalose, mannitol and 0.01% Tween 80 are added as protectants before lyophilization.<br>Please refer to the specific buffer information in the printed manual. |
| <b>Reconstitution</b> | Please refer to the printed manual for detailed information.   |

### Data



> 95 % as determined by reducing SDS-PAGE.

### Background

The immunoglobulin-like transcript (ILT) family (also named leukocyte Ig-like receptors (LIR) and monocyte/macrophage Ig-like receptors (MIR)) can be activating and inhibitory immunoreceptors. ILTs are expressed on many leukocyte subsets and regulators of immune responses. ILTs share significant homology with killer cell Ig-like receptors (KIR). Except ILT-6, all ILT family members are type I transmembrane proteins having two or four extracellular Ig-like domains. ILT2 is expressed on most monocytes, dendritic cells, and mature B cells. ILT2 is also expressed on small percentages of T-cells and NK cells. ILT2 can prevent cellular activation.

### For Research Use Only

Toll-free: 1-888-852-8623  
Web: [www.elabscience.com](http://www.elabscience.com)

Tel: 1-832-243-6086  
Email: [techsupport@elabscience.com](mailto:techsupport@elabscience.com)

Fax: 1-832-243-6017