

beta actin Monoclonal Antibody

catalog number: **AN005290L**

Note: Centrifuge before opening to ensure complete recovery of vial contents.

Description

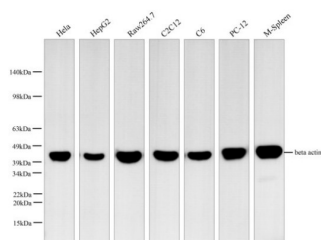
Reactivity	Human;Mouse;Rat
Immunogen	Recombinant human Beta actin protein by E.coli
Host	Mouse
Isotype	IgG1
Clone	3A9
Purification	Protein A/G Purification
Buffer	PBS with 0.05% Proclin300, 1% protective protein and 50% glycerol, pH7.4

Applications

Recommended Dilution

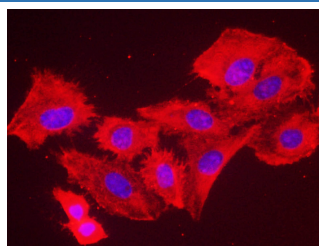
WB	1:2000-1:4000
IHC	1:200-1:400
IF	1:200-1:400

Data

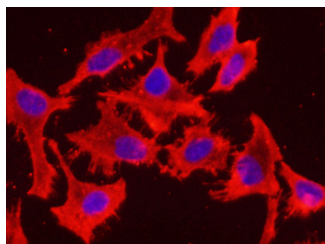


Western blot with Anti beta actin Monoclonal Antibody at dilution of 1:3000. Lane 1:HeLa cell lysate,Lane 2:HepG2 cell lysate, Lane 3:RAW264.7 cell lysate,Lane 4:C2C12 cell lysate,Lane 5:C6 cell lysate,Lane 6:PC-12 cell lysate,Lane 7:Mouse Spleen tissue lysate.

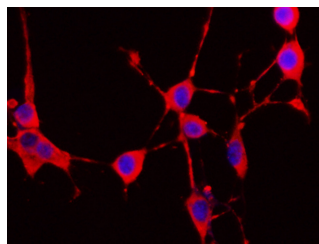
Observed-MW:43 kDa
Calculated-MW:43 kDa



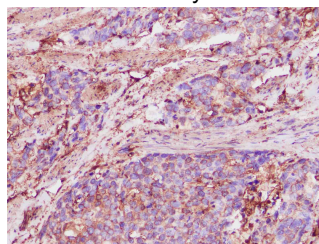
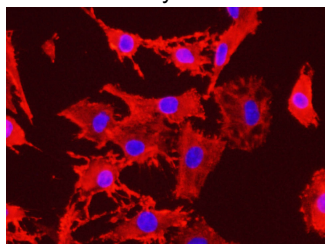
Immunofluorescence analysis of U-2 OS cells using beta actin Monoclonal Antibody at dilution of 1:200.



Immunofluorescence analysis of HeLa cells using beta actin Monoclonal Antibody at dilution of 1:200.



Immunofluorescence analysis of NIH/3T3 cells using beta actin Monoclonal Antibody at dilution of 1:200.



For Research Use Only

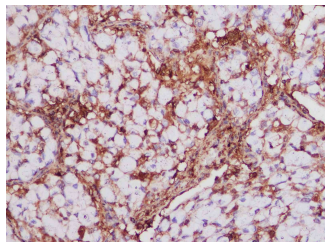
Toll-free: 1-888-852-8623
Web: www.elabscience.com

Tel: 1-832-243-6086
Email: techsupport@elabscience.com

Fax: 1-832-243-6017

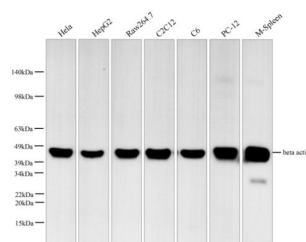
Rev. V1.7

Immunofluorescence analysis of C6 cells using beta actin Monoclonal Antibody at dilution of 1:200.



Immunohistochemistry of paraffin-embedded Human Lung cancer using beta actin Monoclonal Antibody at dilution of 1:1000.

Immunohistochemistry of paraffin-embedded Human Stomach cancer using beta actin Monoclonal Antibody at dilution of 1:1000.



Western blot with Anti beta actin Monoclonal Antibody at dilution of 1:3000. Lane 1:HeLa cell lysate,Lane 2:HepG2 cell lysate, Lane 3:RAW264.7 cell lysate,Lane 4:C2C12 cell lysate,Lane 5:C6 cell lysate,Lane 6:PC-12 cell lysate,Lane 7:Mouse Spleen tissue lysate.

Observed-MW:43 kDa

Calculated-MW:43 kDa

Preparation & Storage

Storage

Store at -20°C Valid for 12 months. Avoid freeze / thaw cycles.

Shipping

The product is shipped with ice pack, upon receipt, store it immediately at the temperature recommended.

Background

Beta-actin (ACTB/ACTB) is one of six different actin isoforms in humans. Actins are highly conserved proteins that are involved in cell motility, structure and integrity. Beta actin is a major constituent of the contractile apparatus and one of the two nonmuscle cytoskeletal actins. Beta-actin gene is stably and constitutively expressed at high levels in most tissues and cells, and commonly used as a loading control for western blot and as a control for qPCR.