

# Recombinant Caspase 8 Monoclonal Antibody

Catalog Number:E-AB-81540



**Note:** Centrifuge before opening to ensure complete recovery of vial contents.

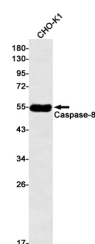
## Description

<b>Reactivity</b>	Hamster
<b>Immunogen</b>	A synthetic peptide of human Caspase-8
<b>Host</b>	Rabbit
<b>Isotype</b>	IgG
<b>Clone</b>	R02-0D7
<b>Purification</b>	Affinity Purified
<b>Conjugation</b>	Unconjugated
<b>Formulation</b>	50mM Tris-Glycine(pH 7.4), 0.15M NaCl, 40% Glycerol, 0.01% Sodium azide and 0.05% protective protein

## Applications Recommended Dilution

<b>WB</b>	1:500-1:1000
-----------	--------------

## Data



Western blot detection of Caspase-8 in CHO-K1 cell lysates using Caspase-8 Rabbit mAb(1:500 diluted).Predicted band size:55kDa.Observed band size:55kDa.

**Observed Mw:55kDa**  
**Calculated Mw:55kDa**

## Preparation & Storage

**Storage** Store at -20°C. Avoid freeze / thaw cycles.

## Background

Caspase 8,also named as MCH5,MACH,FLICE,and CAP4,belongs to the peptidase C14A family. It may participate in the GZMB apoptotic pathways and functions as an upstream regulator in a-bisabolol-induced apoptosis. Caspase 8 catalyzes an essential intermediate step in the ubiquitination and proteasome-mediated degradation of IRF3. It may control diabetic embryopathy-associated apoptosis via Caspase 8 is expressed as nine isoforms by alternative splicing with the molecular mass from 26 kDa to 62 kDa. Caspase 8 Monoclonal Antibody can recognize pro- and cleaved-caspase 8.

## For Research Use Only

A Reliable Research Partner in Life Science and Medicine

Toll-free: 1-888-852-8623

Web: [www.elabscience.com](http://www.elabscience.com)

Tel: 1-832-243-6086

Email: [techsupport@elabscience.com](mailto:techsupport@elabscience.com)

Fax: 1-832-243-6017