

# DPYSL3 Polyclonal Antibody

catalog number: E-AB-18723

**Note:** Centrifuge before opening to ensure complete recovery of vial contents.

## Description

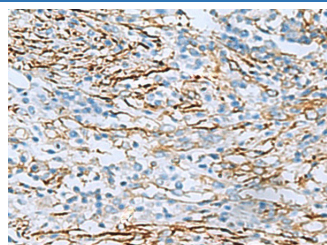
<b>Reactivity</b>	Human;Mouse;Rat
<b>Immunogen</b>	Fusion protein of human DPYSL3
<b>Host</b>	Rabbit
<b>Isotype</b>	IgG
<b>Purification</b>	Antigen affinity purification
<b>Conjugation</b>	Unconjugated
<b>buffer</b>	Phosphate buffered solution, pH 7.4, containing 0.05% stabilizer and 50% glycerol.

## Applications

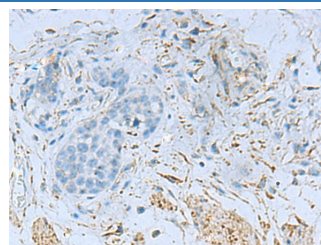
## Recommended Dilution

<b>IHC</b>	1:50-1:100
------------	------------

## Data



Immunohistochemistry of paraffin-embedded Human breast cancer tissue using DPYSL3 Polyclonal Antibody at dilution of 1:55(×200)



Immunohistochemistry of paraffin-embedded Human esophagus cancer tissue using DPYSL3 Polyclonal Antibody at dilution of 1:55(×200)

## Preparation & Storage

<b>Storage</b>	Store at -20°C Valid for 12 months. Avoid freeze / thaw cycles.
<b>Shipping</b>	The product is shipped with ice pack,upon receipt,store it immediately at the temperature recommended.

## Background

Collapsin response mediator protein 4 is an enzyme that in humans is encoded by the CRMP4 gene. Mostly expressed in heart, skeletal muscle, fetal brain and spinal cord. It has phosphorylation sites on Ser-522 by DYRK2 promotes subsequent phosphorylation on Thr-509, Thr-514 and Ser-518 by GSK3.

## For Research Use Only