

Recombinant Human CDC42/G25K Protein (GST Tag)

Catalog Number:PKSH031903



Note: Centrifuge before opening to ensure complete recovery of vial contents.

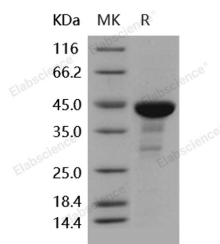
Description

Synonyms	CDC42Hs;G25K
Species	Human
Expression Host	E.coli
Sequence	Met 1-Cys 188
Accession	P60953-2
Calculated Molecular Weight	48.1 kDa
Observed molecular weight	44 kDa
Tag	N-GST

Properties

Purity	> 85 % as determined by reducing SDS-PAGE.
Endotoxin	Please contact us for more information.
Storage	Generally, lyophilized proteins are stable for up to 12 months when stored at -20 to -80°C. Reconstituted protein solution can be stored at 4-8°C for 2-7 days. Aliquots of reconstituted samples are stable at < -20°C for 3 months.
Shipping	This product is provided as lyophilized powder which is shipped with ice packs.
Formulation	Lyophilized from sterile 20mM Tris, 0.15M NaCl, 0.5mM GSH, pH 8.0 Normally 5 % - 8 % trehalose, mannitol and 0.01% Tween80 are added as protectants before lyophilization. Please refer to the specific buffer information in the printed manual.
Reconstitution	Please refer to the printed manual for detailed information.

Data



> 85 % as determined by reducing SDS-PAGE.

Background

Nucleophosmin 1 (NPM1), also known as nucleolar phosphoprotein B23 or numatrin, is a member of the nucleoplasmin family. Nucleophosmin (NPM) is a nucleolar phosphoprotein that plays multiple roles in ribosome assembly and transport, cytoplasmic-nuclear trafficking, centrosome duplication and regulation of p53. The NPM1 gene is frequently involved in chromosomal translocation, mutation and deletion. Mutations of the NPM1 gene leading to the expression of a cytoplasmic mutant protein, NPMc+, are the most frequent genetic abnormalities found in acute myeloid leukemias. Acute myeloid leukemias (AML) with mutated NPM1 have distinct characteristics, including a significant association with a normal karyotype, involvement of different hematopoietic lineages, a specific gene-expression profile and clinically, a better response to induction therapy and a favorable prognosis. In addition, NPM1 is a crucial gene to

For Research Use Only

A Reliable Research Partner in Life Science and Medicine

Toll-free: 1-888-852-8623

Web: www.elabscience.com

Tel: 1-832-243-6086

Email: techsupport@elabscience.com

Fax: 1-832-243-6017

Recombinant Human CDC42/G25K Protein (GST Tag)

Catalog Number: PKSH031903



consider in the context of the genetics and biology of cancer. NPM1 is frequently overexpressed, mutated, rearranged and deleted in human cancer. Traditionally regarded as a tumour marker and a putative proto-oncogene, it has now also been attributed with tumour-suppressor functions.

For Research Use Only

A Reliable Research Partner in Life Science and Medicine

Toll-free: 1-888-852-8623

Web: www.elabscience.com

Tel: 1-832-243-6086

Email: techsupport@elabscience.com

Fax: 1-832-243-6017