

## ZP2 Polyclonal Antibody

**catalog number: E-AB-63275**

**Note:** Centrifuge before opening to ensure complete recovery of vial contents.

### Description

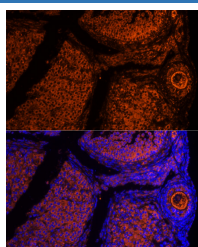
|                     |  |
|---------------------|--|
| <b>Reactivity</b>   | Human;Mouse;Rat  |
| <b>Immunogen</b>    | Recombinant fusion protein of human ZP2 (NP_003451.1).                             |
| <b>Host</b>         | Rabbit   |
| <b>Isotype</b>      | IgG  |
| <b>Purification</b> | Affinity purification  |
| <b>Buffer</b>       | Phosphate buffered solution, pH 7.4, containing 0.05% stabilizer and 50% glycerol. |

### Applications

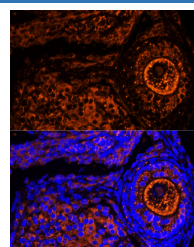
| Applications | Recommended Dilution |
|--------------|----------------------|
|--------------|----------------------|

|    |            |
|----|------------|
| IF | 1:50-1:200 |
|----|------------|

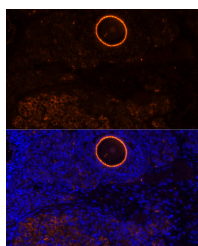
### Data



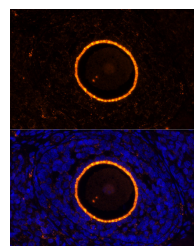
Immunofluorescence analysis of Mouse oophoroma cells using ZP2 Polyclonal Antibody at dilution of 1:100. Blue: DAPI for nuclear staining.



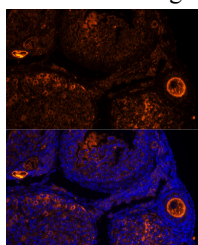
Immunofluorescence analysis of Mouse oophoroma cells using ZP2 Polyclonal Antibody at dilution of 1:100. Blue: DAPI for nuclear staining.



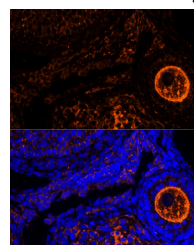
Immunofluorescence analysis of Rat oophoroma cells using ZP2 Polyclonal Antibody at dilution of 1:100. Blue: DAPI for nuclear staining.



Immunofluorescence analysis of Rat oophoroma cells using ZP2 Polyclonal Antibody at dilution of 1:100. Blue: DAPI for nuclear staining.



Immunofluorescence analysis of Mouse oophoroma cells using ZP2 Polyclonal Antibody at dilution of 1:100. Blue: DAPI for nuclear staining.



Immunofluorescence analysis of Mouse oophoroma cells using ZP2 Polyclonal Antibody at dilution of 1:100. Blue: DAPI for nuclear staining.

### Preparation & Storage

|                |   |
|----------------|---|
| <b>Storage</b> | Store at -20°C Valid for 12 months. Avoid freeze / thaw cycles. |
|----------------|---|

### For Research Use Only

**Shipping**

The product is shipped with ice pack, upon receipt, store it immediately at the temperature recommended.

**Background**

The zona pellucida is an extracellular matrix that surrounds the oocyte and early embryo. It is composed of three glycoproteins with various functions during fertilization and preimplantation development. The glycosylated mature peptide is one of the structural components of the zona pellucida and functions in secondary binding and penetration of acrosome-reacted spermatozoa. Female mice lacking this gene do not form a stable zona matrix and are sterile. Alternative splicing results in multiple transcript variants.

**For Research Use Only**