

# PWP1 Polyclonal Antibody

catalog number: E-AB-18842

**Note:** Centrifuge before opening to ensure complete recovery of vial contents.

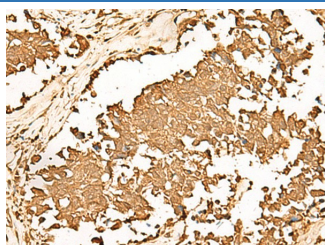
## Description

<b>Reactivity</b>	Human;Mouse
<b>Immunogen</b>	Fusion protein of human PWP1
<b>Host</b>	Rabbit
<b>Isotype</b>	IgG
<b>Purification</b>	Antigen affinity purification
<b>Conjugation</b>	Unconjugated
<b>buffer</b>	Phosphate buffered solution, pH 7.4, containing 0.05% stabilizer and 50% glycerol.

## Applications Recommended Dilution

<b>IHC</b>	1:50-1:300
------------	------------

## Data



Immunohistochemistry of paraffin-embedded Human lung cancer tissue using PWP1 Polyclonal Antibody at dilution of 1:70( $\times 200$ )

## Preparation & Storage

<b>Storage</b>	Store at -20°C Valid for 12 months. Avoid freeze / thaw cycles.
<b>Shipping</b>	The product is shipped with ice pack, upon receipt, store it immediately at the temperature recommended.

## Background

The protein encoded by this gene contains several WD-40 repeats and is found mostly in the nucleus. The expression and localization of this protein are cell cycle dependent. Expression of this gene is upregulated in pancreatic adenocarcinoma. Three transcript variants encoding different isoforms have been found for this gene.

## For Research Use Only