

# CDKN2A Polyclonal Antibody

catalog number: AN005860L

**Note:** Centrifuge before opening to ensure complete recovery of vial contents.

## Description

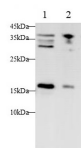
<b>Reactivity</b>	Human
<b>Immunogen</b>	Recombinant Human CDKN2A protein expressed by E.coli
<b>Host</b>	Rabbit
<b>Isotype</b>	IgG
<b>Purification</b>	Antigen Affinity Purification
<b>Conjugation</b>	Unconjugated
<b>buffer</b>	PBS with 0.05% proclin 300, 1% protective protein and 50% glycerol,pH7.4

## Applications

## Recommended Dilution

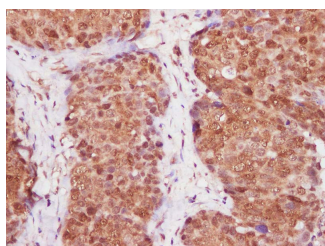
<b>WB</b>	1:500-1:1000
<b>IHC</b>	1:400-1:800

## Data

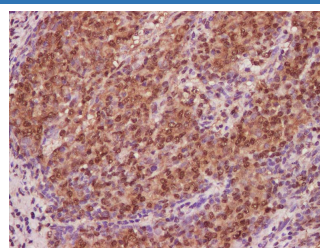


Western blot with Anti CDKN2A Polyclonal antibody at dilution of 1:1000. Lane 1: HeLa cell lysate, Lane 2: 293 cell lysate.

**Observed-MV:16 kDa**  
**Calculated-MV:14 kDa**



Immunohistochemistry of paraffin-embedded Human endometrium cancer using CDKN2A Polyclonal Antibody at dilution of 1:600.



Immunohistochemistry of paraffin-embedded Human cervix cancer using CDKN2A Polyclonal Antibody at dilution of 1:600.

## Preparation & Storage

<b>Storage</b>	Store at -20°C Valid for 12 months. Avoid freeze / thaw cycles.
<b>Shipping</b>	The product is shipped with ice pack, upon receipt, store it immediately at the temperature recommended.

## Background

Acts as a negative regulator of the proliferation of normal cells by interacting strongly with CDK4 and CDK6. This inhibits their ability to interact with cyclins D and to phosphorylate the retinoblastoma protein.

## For Research Use Only