

Recombinant Human CD30/TNFRSF8 Protein (His Tag)

Catalog Number: PKSH031431

Note: Centrifuge before opening to ensure complete recovery of vial contents.

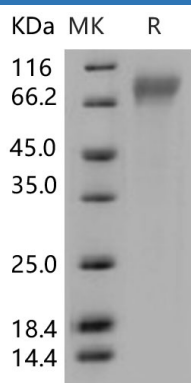
Description

Species	Human
Source	HEK293 Cells-derived Human CD30/TNFRSF8 protein Met 1-Lys 379, with an C-terminal His
Mol_Mass	40 kDa
Accession	NP_001234.2
Bio-activity	Measured by its binding ability in a functional ELISA. 2. Immobilized recombinant human CD30 at 2 µg/ml (100 µl/well) can bind human CD30L Fc Chimera with a linear range of 6. 4-800 ng/ml.

Properties

Purity	> 95 % as determined by reducing SDS-PAGE.
Endotoxin	< 1.0 EU per µg of the protein as determined by the LAL method.
Storage	Generally, lyophilized proteins are stable for up to 12 months when stored at -20 to -80 °C. Reconstituted protein solution can be stored at 4-8°C for 2-7 days. Aliquots of reconstituted samples are stable at < -20°C for 3 months.
Shipping	This product is provided as lyophilized powder which is shipped with ice packs.
Formulation	Lyophilized from sterile PBS, pH 7.4 Normally 5% - 8% trehalose, mannitol and 0.01% Tween 80 are added as protectants before lyophilization. Please refer to the specific buffer information in the printed manual.
Reconstitution	Please refer to the printed manual for detailed information.

Data



> 95 % as determined by reducing SDS-PAGE.

Background

For Research Use Only

CD30, also known as TNFRSF8, is a cell membrane protein of the tumor necrosis factor receptor (TNFR) superfamily. CD30 protein is expressed by activated, but not resting, T and B cells. CD30 can regulate proliferation of lymphocytes and may also play an important role in human immunodeficiency virus replication. As a regulator of apoptosis, CD30 protein induces cell death or proliferation, depending on the cell type, and has been shown to limit the proliferative potential of autoreactive CD8 effector T cells and protect the body against autoimmunity. CD30 protein expression is upregulated in various hematological malignancies, including Reed-Sternberg cells in Hodgkin's disease (HD), anaplastic large cell lymphoma (ALCL) and subsets of Non-Hodgkin's lymphomas (NHLs), and CD30 is also linked to leukocytes in patients with chronic inflammatory diseases, including lupus erythematosus, asthma, rheumatoid arthritis and atopic dermatitis (AD).

For Research Use Only

Toll-free: 1-888-852-8623
Web: www.elabscience.com

Tel: 1-832-243-6086
Email: techsupport@elabscience.com

Fax: 1-832-243-6017

Rev. V3.4