

GPS1 Polyclonal Antibody

catalog number: E-AB-61403

Note: Centrifuge before opening to ensure complete recovery of vial contents.

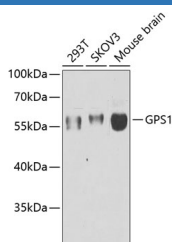
Description

Reactivity	Human;Mouse
Immunogen	Recombinant fusion protein of human GPS1 (NP_997657.1).
Host	Rabbit
Isotype	IgG
Purification	Affinity purification
Buffer	Phosphate buffered solution, pH 7.4, containing 0.05% stabilizer and 50% glycerol.

Applications

Applications	Recommended Dilution
WB	1:500-1:2000
IHC	1:50-1:200
IF	1:50-1:100

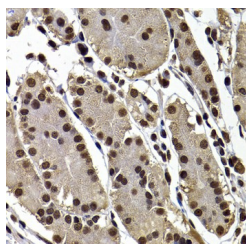
Data



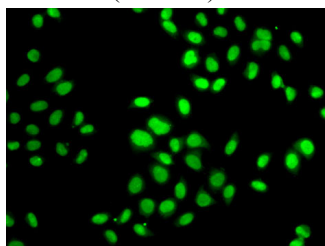
Western blot analysis of extracts of various cell lines using GPS1 Polyclonal Antibody at dilution of 1:1000.

Observed-MV:55 kDa

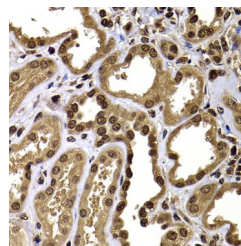
Calculated-MV:55 kDa/59 kDa



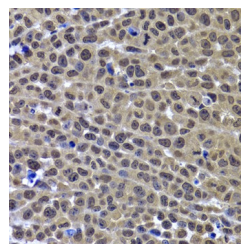
Immunohistochemistry of paraffin-embedded Human stomach using GPS1 Polyclonal Antibody at dilution of 1:100 (40x lens).



Immunofluorescence analysis of MCF7 cells using GPS1 Polyclonal Antibody



Immunohistochemistry of paraffin-embedded Human kidney using GPS1 Polyclonal Antibody at dilution of 1:100 (40x lens).



Immunohistochemistry of paraffin-embedded Mouse cancer using GPS1 Polyclonal Antibody at dilution of 1:100 (40x lens).

For Research Use Only

Preparation & Storage

Storage

Store at -20°C Valid for 12 months. Avoid freeze / thaw cycles.

Shipping

The product is shipped with ice pack, upon receipt, store it immediately at the temperature recommended.

Background

This gene is known to suppress G-protein and mitogen-activated signal transduction in mammalian cells. The encoded protein shares significant similarity with Arabidopsis FUS6, which is a regulator of light-mediated signal transduction in plant cells.

For Research Use Only