

CBX3 Monoclonal Antibody

Catalog Number: E-AB-22270

Note: Centrifuge before opening to ensure complete recovery of vial contents.

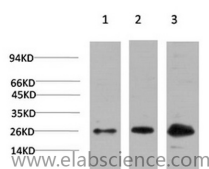
Description

Reactivity	Human, Mouse, Rat
Immunogen	Recombinant Protein of HP-1 γ
Host	Mouse
Isotype	IgG
Clone	Clone: 4F4
Purification	Protein A purification
Formulation	PBS with 0.02% sodium azide and 50% glycerol pH 7.4.

Applications Recommended Dilution

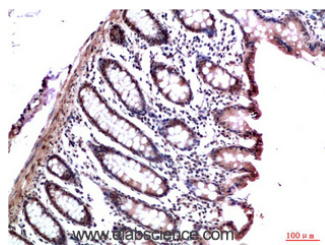
WB	1:500-2000
IHC	1:50-300

Data

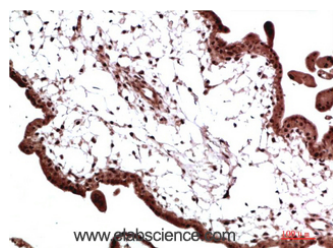


Western Blot analysis of 1) HeLa, 2) 3T3, 3) PC12 cells using CBX3 Monoclonal Antibody at dilution of 1:1000.

Observed MW: 24kDa



Immunohistochemistry of paraffin-embedded Human colon carcinoma tissue using CBX3 Monoclonal Antibody at dilution of 1:200.



Immunohistochemistry of paraffin-embedded Human placenta tissue using CBX3 Monoclonal Antibody at dilution of 1:200.

Preparation & Storage

Storage Store at -20°C. Avoid freeze / thaw cycles.

Background

At the nuclear envelope, the nuclear lamina and heterochromatin are adjacent to the inner nuclear membrane. The protein encoded by this gene binds DNA and is a component of heterochromatin. This protein also can bind lamin B receptor, an integral membrane protein found in the inner nuclear membrane. The dual binding functions of the encoded protein may

For Research Use Only

A Reliable Research Partner in Life Science and Medicine

Toll-free: 1-888-852-8623

Web: www.elabscience.com

Tel: 1-832-243-6086

Email: techsupport@elabscience.com

Fax: 1-832-243-6017

CBX3 Monoclonal Antibody

Catalog Number: E-AB-22270



explain the association of heterochromatin with the inner nuclear membrane. This protein binds histone H3 tails methylated at Lys-9 sites. This protein is also recruited to sites of ultraviolet-induced DNA damage and double-strand breaks.

For Research Use Only

A Reliable Research Partner in Life Science and Medicine

Toll-free: 1-888-852-8623

Tel: 1-832-243-6086

Fax: 1-832-243-6017

Web: www.elabscience.com

Email: techsupport@elabscience.com