

SPATA20 Polyclonal Antibody

catalog number: E-AB-16072

Note: Centrifuge before opening to ensure complete recovery of vial contents.

Description

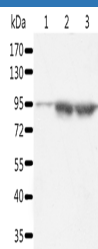
Reactivity	Human
Immunogen	Synthetic peptide of human SPATA20
Host	Rabbit
Isotype	IgG
Purification	Affinity purification
Conjugation	Unconjugated
Buffer	Phosphate buffered solution, pH 7.4, containing 0.05% stabilizer and 50% glycerol.

Applications

Recommended Dilution

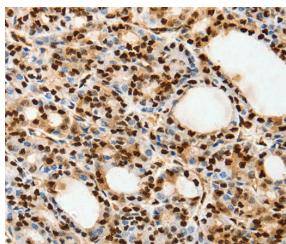
WB	1:500-1:2000
IHC	1:100-1:300

Data

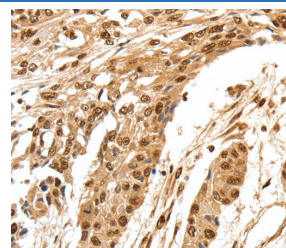


Western Blot analysis of A549 and Incap cell, Human seminoma tissue using SPATA20 Polyclonal Antibody at dilution of 1:1000

Calculated-MW:88 kDa



Immunohistochemistry of paraffin-embedded Human thyroid cancer using SPATA20 Polyclonal Antibody at dilution of 1:70



Immunohistochemistry of paraffin-embedded Human esophagus cancer using SPATA20 Polyclonal Antibody at dilution of 1:70

Preparation & Storage

Storage	Store at -20°C Valid for 12 months. Avoid freeze / thaw cycles.
Shipping	The product is shipped with ice pack, upon receipt, store it immediately at the temperature recommended.

Background

The protein may play a role in fertility regulation. It were significantly upregulated in individual bile samples from Cholangiocarcinoma patients by Western blotting and Immunohistochemistry, relative to normal tissues. It acts as a potential serum diagnostic biomarker for Cholangiocarcinoma.

For Research Use Only