

MRPS28 Polyclonal Antibody

catalog number: **E-AB-65491**

Note: Centrifuge before opening to ensure complete recovery of vial contents.

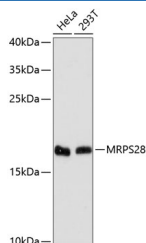
Description

Reactivity	Human;Mouse
Immunogen	Recombinant fusion protein of human MRPS28 (NP_054737.1).
Host	Rabbit
Isotype	IgG
Purification	Affinity purification
Buffer	Phosphate buffered solution, pH 7.4, containing 0.05% stabilizer and 50% glycerol.

Applications Recommended Dilution

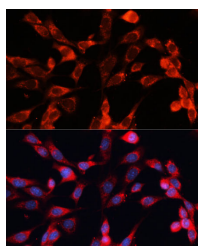
WB	1:500-1:1000
IF	1:20-1:100

Data



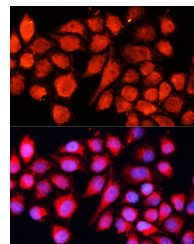
Western blot analysis of extracts of various cell lines using MRPS28 Polyclonal Antibody at dilution of 1:3000.

Observed-MW:21 kDa
Calculated-MW:20 kDa



Immunofluorescence analysis of NIH-3T3 cells using MRPS28 Polyclonal Antibody at dilution of 1:100 (40x lens).

Blue: DAPI for nuclear staining.



Immunofluorescence analysis of HeLa cells using MRPS28 Polyclonal Antibody at dilution of 1:100 (40x lens). Blue: DAPI for nuclear staining.

Preparation & Storage

Storage	Store at -20°C Valid for 12 months. Avoid freeze / thaw cycles.
Shipping	The product is shipped with ice pack, upon receipt, store it immediately at the temperature recommended.

Background

For Research Use Only

Mammalian mitochondrial ribosomal proteins are encoded by nuclear genes and help in protein synthesis within the mitochondrion. Mitochondrial ribosomes (mitoribosomes) consist of a small 28S subunit and a large 39S subunit. They have an estimated 75% protein to rRNA composition compared to prokaryotic ribosomes, where this ratio is reversed. Another difference between mammalian mitoribosomes and prokaryotic ribosomes is that the latter contain a 5S rRNA. Among different species, the proteins comprising the mitoribosome differ greatly in sequence, and sometimes in biochemical properties, which prevents easy recognition by sequence homology. This gene encodes a 28S subunit protein that has been called mitochondrial ribosomal protein S35 in the literature.

For Research Use Only