

## EpCAM Polyclonal Antibody

**catalog number: D-AB-10365L**

**Note:** Centrifuge before opening to ensure complete recovery of vial contents.

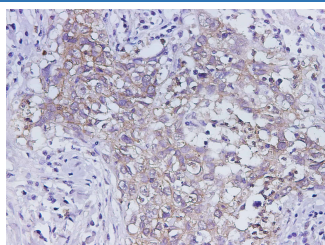
### Description

<b>Reactivity</b>	Human
<b>Immunogen</b>	Recombinant Human EPCAM protein expressed by E.coli
<b>Host</b>	Rabbit
<b>Isotype</b>	IgG
<b>Purification</b>	Antigen Affinity Purification
<b>Buffer</b>	PBS with 0.05% Proclin300, 1% protective protein and 50% glycerol, pH7.4

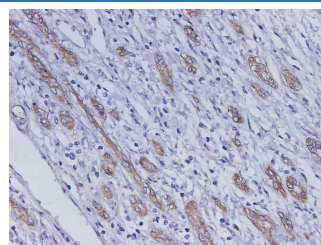
### Applications Recommended Dilution

<b>IHC</b>	1:50-1:100
------------	------------

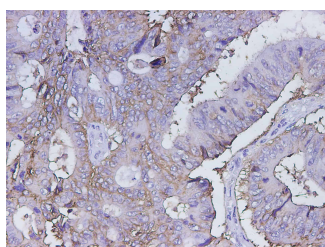
### Data



Immunohistochemistry of paraffin-embedded Human lung cancer using EPCAM Polyclonal Antibody at dilution of 1:100



Immunohistochemistry of paraffin-embedded Human liver cancer using EPCAM Polyclonal Antibody at dilution of 1:100



Immunohistochemistry of paraffin-embedded Human colon cancer using EPCAM Polyclonal Antibody at dilution of 1:100

### Preparation & Storage

<b>Storage</b>	Store at -20°C Valid for 12 months. Avoid freeze / thaw cycles.
<b>Shipping</b>	The product is shipped with ice pack, upon receipt, store it immediately at the temperature recommended.

### Background

Epithelial cell adhesion molecule (EpCAM, CD326) is a type I transmembrane glycoprotein that functions as a homophilic, epithelial-specific intercellular cell-adhesion molecule. In addition to cell adhesion, EpCAM is also involved in cellular signaling, cell migration, proliferation, and differentiation. EpCAM is highly expressed on most carcinomas and therefore of potential use as a diagnostic and prognostic marker for a variety of carcinomas, and has become a therapeutic target.

### For Research Use Only