

AMY1 Polyclonal Antibody(Capture/Detector)

catalog number: AN000400P

Note: Centrifuge before opening to ensure complete recovery of vial contents.

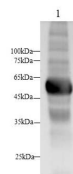
Description

Reactivity	Human;Mouse
Immunogen	Recombinant Human AMY1 Protein expressed by Mammalian
Host	Rabbit
Isotype	Rabbit IgG
Purification	Antigen Affinity Purification
Buffer	Phosphate buffered solution, pH 7.2, containing 0.05% proclin 300.

Applications

Applications	Recommended Dilution
WB	1:500-1:1000
IHC	1:250-1:500
ELISA Capture	2-8 µg/mL
ELISA Detector	0.1-0.4 µg/mL

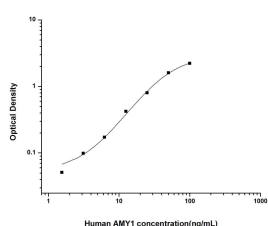
Data



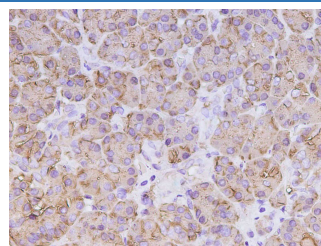
Western Blot with AMY1 Polyclonal Antibody at dilution of 1:500. Lane 1: Mouse pancreas

Observed-MV: 58 kDa

Calculated-MV: 58 kDa



Sandwich ELISA-Recombinant Human AMY1 Protein standard curve. Background subtracted standard curve using AMY1 antibody(AN000400P)(Capture), AMY1 antibody(AN000400P)(Detector) in sandwich ELISA. The reference range value for Recombinant Human AMY1 Protein is 1.56-100 ng/mL.



Immunohistochemistry of paraffin-embedded Human pancreas using AMY1 Polyclonal Antibody at dilution of 1:500

Preparation & Storage

Storage	Store at 4°C valid for 12 months or -20°C valid for long term storage, avoid freeze / thaw cycles.
----------------	--

For Research Use Only

Shipping

The product is shipped with ice pack, upon receipt, store it immediately at the temperature recommended.

Background

Calcium-binding enzyme that initiates starch digestion in the oral cavity. Catalyzes the hydrolysis of internal (1→4)-α-D-glucosidic bonds, yielding a mixture of maltose, isomaltose, small amounts of glucose as well as small linear and branched oligosaccharides called dextrins.

For Research Use Only