

## RNPEP Polyclonal Antibody

catalog number: **E-AB-92568**

**Note:** Centrifuge before opening to ensure complete recovery of vial contents.

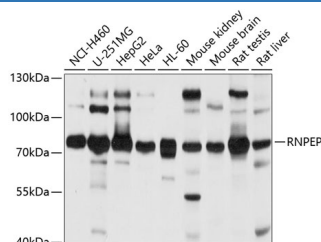
### Description

<b>Reactivity</b>	Human;Mouse;Rat
<b>Immunogen</b>	Recombinant fusion protein of human RNPEP
<b>Host</b>	Rabbit
<b>Isotype</b>	IgG
<b>Purification</b>	Affinity purification
<b>Buffer</b>	Phosphate buffered solution, pH 7.4, containing 0.05% stabilizer and 50% glycerol.

### Applications

<b>WB</b>	1:1000-1:2000
-----------	---------------

### Data



Western blot analysis of extracts of various cell lines using  
RNPEP Polyclonal Antibody at 1:1000 dilution.

**Observed-MW:80 kDa**

**Calculated-MW:72 kDa**

### Preparation & Storage

<b>Storage</b>	Store at -20°C Valid for 12 months. Avoid freeze / thaw cycles.
<b>Shipping</b>	The product is shipped with ice pack, upon receipt, store it immediately at the temperature recommended.

### Background

Exopeptidase which selectively removes arginine and/or lysine residues from the N-terminus of several peptide substrates including Arg(0-Leu-enkephalin, Arg(0-Met-enkephalin and Arg(-1-Lys(0-somatostatin-14. Can hydrolyze leukotriene A4 (LTA-4 into leukotriene B4 (LTB-4 (By similarity.

### For Research Use Only