

## Recombinant Mouse IL-17D Protein(Sumo Tag)

**Catalog Number:** PDEM100177

**Note:** Centrifuge before opening to ensure complete recovery of vial contents.

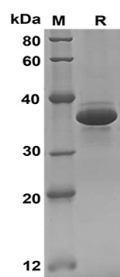
### Description

<b>Species</b>	Mouse
<b>Source</b>	E.coli-derived Mouse IL-17D protein Ala23-Arg205, with an N-terminal Sumo
<b>Calculated MW</b>	33 kDa
<b>Observed MW</b>	38 kDa
<b>Accession</b>	Q8K4C4
<b>Bio-activity</b>	Not validated for activity

### Properties

<b>Purity</b>	> 90% as determined by reducing SDS-PAGE.
<b>Endotoxin</b>	< 10 EU/mg of the protein as determined by the LAL method
<b>Storage</b>	Generally, lyophilized proteins are stable for up to 12 months when stored at -20 to -80 °C. Reconstituted protein solution can be stored at 4-8°C for 2-7 days. Aliquots of reconstituted samples are stable at < -20°C for 3 months.
<b>Shipping</b>	This product is provided as lyophilized powder which is shipped with ice packs.
<b>Formulation</b>	Lyophilized from a 0.2 µm filtered solution in PBS with 5% Trehalose and 5% Mannitol.
<b>Reconstitution</b>	It is recommended that sterile water be added to the vial to prepare a stock solution of 0.5 mg/mL. Concentration is measured by UV-Vis.

### Data



SDS-PAGE analysis of Mouse IL-17D proteins, 2 µg/lane of  
Recombinant Mouse IL-17D proteins was resolved with  
SDS-PAGE under reducing conditions, showing bands at 38  
KD

### Background

### For Research Use Only

Toll-free: 1-888-852-8623  
Web: [www.elabscience.com](http://www.elabscience.com)

Tel: 1-832-243-6086  
Email: [techsupport@elabscience.com](mailto:techsupport@elabscience.com)

Fax: 1-832-243-6017

Rev. V1.7

The Interleukin-17 family proteins, comprising six members (IL-17, IL-17B through IL-17F), are secreted, structurally related proteins that share a conserved cysteine-knot fold near the C-terminus, but have considerable sequence divergence at the N-terminus. IL-17 family proteins are proinflammatory cytokines that induce local cytokine production and are involved in the regulation of immune functions. Among IL-17 family members, IL-17D is most closely related to IL-17B, sharing 27% aa sequence homology. IL-17D is expressed preferentially in skeletal muscle, heart, adipose tissue, lung, pancreas, and nervous system. Like other IL-17 family members, IL-17D modulates immune responses indirectly by stimulating the production of myeloid growth factors and chemokines including IL-6, IL-8, and GM-CSF. IL-17D has also been shown to suppress the proliferation of myeloid progenitors in colony formation assays.