

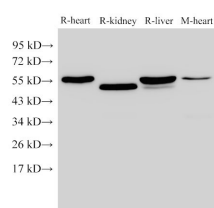
FGB Polyclonal Antibody

catalog number: E-AB-40405

Note: Centrifuge before opening to ensure complete recovery of vial contents.

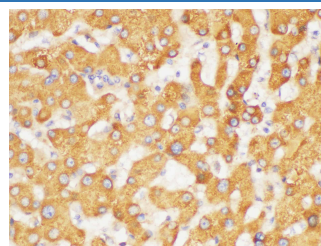
Description	
Reactivity	Human;Mouse;Rat
Immunogen	Recombinant Rat Fibrinogen beta chain protein
Host	Rabbit
Isotype	IgG
Purification	Antigen Affinity Purification
Conjugation	Unconjugated
Buffer	PBS with 0.05% Proclin300, 1% protective protein and 50% glycerol, pH7.4
Applications	Recommended Dilution
WB	1:2000-1:4000
IHC	1:100-1:300

Data

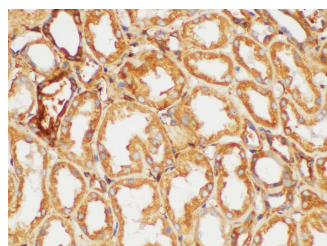


Western Blot analysis of Rat heart, Rat kidney, Rat liver and Mouse heart using FGB Polyclonal Antibody at dilution of 1:4000

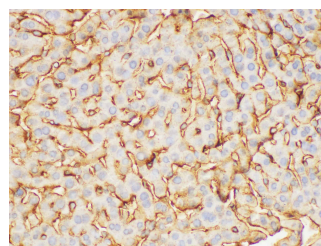
Observed-MW:55 kDa
Calculated-MW:55 kDa



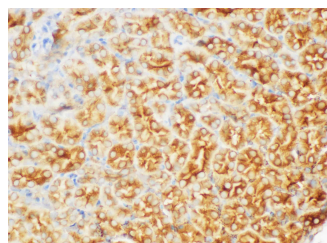
Immunohistochemistry of paraffin-embedded Human liver using FGB Polyclonal Antibody at dilution of 1:200



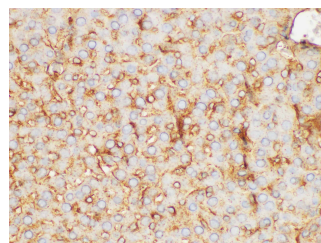
Immunohistochemistry of paraffin-embedded Human kidney using FGB Polyclonal Antibody at dilution of 1:200



Immunohistochemistry of paraffin-embedded Mouse liver using FGB Polyclonal Antibody at dilution of 1:200

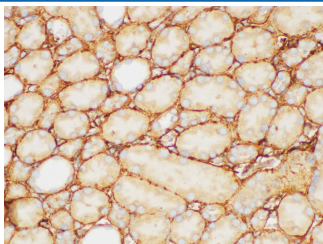


Immunohistochemistry of paraffin-embedded Mouse kidney using FGB Polyclonal Antibody at dilution of 1:200



Immunohistochemistry of paraffin-embedded Rat liver using FGB Polyclonal Antibody at dilution of 1:200

For Research Use Only



Immunohistochemistry of paraffin-embedded Rat kidney
using FGB Polyclonal Antibody at dilution of 1:200

Preparation & Storage

Storage

Store at -20°C Valid for 12 months. Avoid freeze / thaw cycles.

Shipping

The product is shipped with ice pack, upon receipt, store it immediately at the temperature recommended.

Background

The protein encoded by this gene is the beta component of fibrinogen, a blood-borne glycoprotein comprised of three pairs of nonidentical polypeptide chains. Following vascular injury, fibrinogen is cleaved by thrombin to form fibrin which is the most abundant component of blood clots. In addition, various cleavage products of fibrinogen and fibrin regulate cell adhesion and spreading, display vasoconstrictor and chemotactic activities, and are mitogens for several cell types. Mutations in this gene lead to several disorders, including afibrinogenemia, dysfibrinogenemia, hypodysfibrinogenemia and thrombotic tendency.