

# PCYT2 Polyclonal Antibody

catalog number: E-AB-19016

**Note:** Centrifuge before opening to ensure complete recovery of vial contents.

## Description

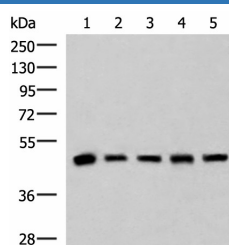
<b>Reactivity</b>	Human;Mouse;Rat
<b>Immunogen</b>	Fusion protein of human PCYT2
<b>Host</b>	Rabbit
<b>Isotype</b>	IgG
<b>Purification</b>	Antigen affinity purification
<b>Conjugation</b>	Unconjugated
<b>buffer</b>	Phosphate buffered solution, pH 7.4, containing 0.05% stabilizer and 50% glycerol.

## Applications

## Recommended Dilution

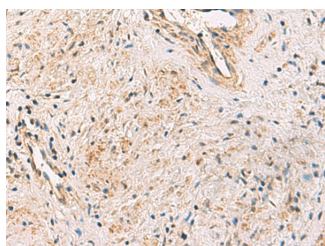
<b>WB</b>	1:1000-1:5000
<b>IHC</b>	1:40-1:200

## Data

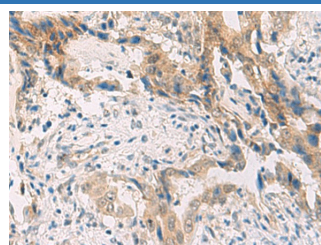


Western blot analysis of Human fetal liver tissue HepG2 A172 HeLa and Jurkat cell lysates using PCYT2 Polyclonal Antibody at dilution of 1:800

**Observed-MV:Refer to figures**  
**Calculated-MV:44 kDa**



Immunohistochemistry of paraffin-embedded Human prostate cancer tissue using PCYT2 Polyclonal Antibody at dilution of 1:55(×200)



Immunohistochemistry of paraffin-embedded Human cervical cancer tissue using PCYT2 Polyclonal Antibody at dilution of 1:55(×200)

## Preparation & Storage

<b>Storage</b>	Store at -20°C Valid for 12 months. Avoid freeze / thaw cycles.
<b>Shipping</b>	The product is shipped with ice pack,upon receipt,store it immediately at the temperature recommended.

## Background

This gene encodes an enzyme that catalyzes the formation of CDP-ethanolamine from CTP and phosphoethanolamine in the Kennedy pathway of phospholipid synthesis. Alternative splicing results in multiple transcript variants.

## For Research Use Only