

# LYPD4 Polyclonal Antibody

catalog number: E-AB-52330

**Note:** Centrifuge before opening to ensure complete recovery of vial contents.

## Description

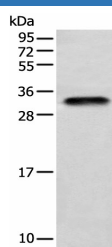
|                     |  |
|---------------------|--|
| <b>Reactivity</b>   | Human  |
| <b>Immunogen</b>    | Full length fusion protein   |
| <b>Host</b>         | Rabbit   |
| <b>Isotype</b>      | IgG  |
| <b>Purification</b> | Antigen affinity purification  |
| <b>Conjugation</b>  | Unconjugated   |
| <b>buffer</b>       | Phosphate buffered solution, pH 7.4, containing 0.05% stabilizer and 50% glycerol. |

## Applications

## Recommended Dilution

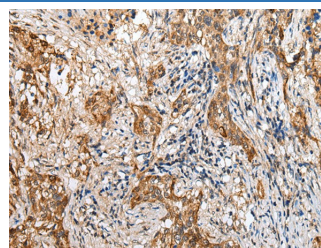
|            |              |
|------------|--------------|
| <b>WB</b>  | 1:500-1:2000 |
| <b>IHC</b> | 1:25-1:100   |

## Data



Western blot analysis of Human testis tissue using LYPD4 Polyclonal Antibody at dilution of 1:400

**Observed-MV: Refer to figures**  
**Calculated-MV: 27 kDa**



Immunohistochemistry of paraffin-embedded Human lung cancer tissue using LYPD4 Polyclonal Antibody at dilution of 1:25 (x200)

## Preparation & Storage

|                 |  |
|-----------------|--|
| <b>Storage</b>  | Store at -20°C Valid for 12 months. Avoid freeze / thaw cycles.  |
| <b>Shipping</b> | The product is shipped with ice pack, upon receipt, store it immediately at the temperature recommended. |

## Background

The specific function of LYPD4 is not yet known.

## For Research Use Only