

## SLC12A5 Polyclonal Antibody

catalog number: E-AB-18162

**Note:** Centrifuge before opening to ensure complete recovery of vial contents.

### Description

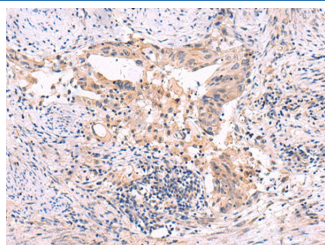
Reactivity	Human;Mouse;Rat
Immunogen	Synthetic peptide of human SLC12A5
Host	Rabbit
Isotype	IgG
Purification	Antigen affinity purification
Conjugation	Unconjugated
Buffer	Phosphate buffered solution, pH 7.4, containing 0.05% stabilizer and 50% glycerol.

### Applications

### Recommended Dilution

IHC	1:30-1:150
-----	------------

### Data



Immunohistochemistry of paraffin-embedded Human cervical cancer tissue using SLC12A5 Polyclonal Antibody at dilution of 1:40(×200)

### Preparation & Storage

Storage	Store at -20°C Valid for 12 months. Avoid freeze / thaw cycles.
Shipping	The product is shipped with ice pack, upon receipt, store it immediately at the temperature recommended.

### Background

K-Cl cotransporters are proteins that lower intracellular chloride concentrations below the electrochemical equilibrium potential. The protein encoded by this gene is an integral membrane K-Cl cotransporter that can function in either a net efflux or influx pathway, depending on the chemical concentration gradients of potassium and chloride. The encoded protein can act as a homomultimer, or as a heteromultimer with other K-Cl cotransporters, to maintain chloride homeostasis in neurons. Alternative splicing results in two transcript variants encoding different isoforms.