

Recombinant Human PI3/Elafin Protein (His Tag)

Catalog Number:PKSH032375



Note: Centrifuge before opening to ensure complete recovery of vial contents.

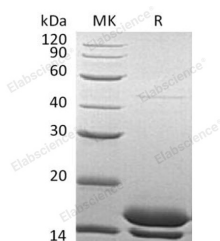
Description

Synonyms	Elafin;Elastase-Specific Inhibitor;ESI;Peptidase Inhibitor 3;PI-3;Protease inhibitor WAP3;Skin-Derived Antileukoproteinase;SKALP;WAP Four-Disulfide Core Domain Protein 14;PI3;WAP3;WFDC14
Species	Human
Expression Host	HEK293 Cells
Sequence	Ala23-Gln117
Accession	P19957
Calculated Molecular Weight	11.0 kDa
Observed molecular weight	13-18 kDa
Tag	C-His

Properties

Purity	> 95 % as determined by reducing SDS-PAGE.
Endotoxin	< 1.0 EU per µg of the protein as determined by the LAL method.
Storage	Store at < -20°C, stable for 6 months. Please minimize freeze-thaw cycles.
Shipping	This product is provided as liquid. It is shipped at frozen temperature with blue ice/gel packs. Upon receipt, store it immediately at < - 20°C.
Formulation	Supplied as a 0.2 µm filtered solution of 20mM Tris-HCl, 150mM NaCl, pH 7.5.
Reconstitution	Not Applicable

Data



> 95 % as determined by reducing SDS-PAGE.

Background

Elafin is a secreted protein. Elafin consists of two domains: the transglutaminase substrate domain (cementoin moiety) and the elastase inhibitor domain. The transglutaminase substrate domain serves as an anchor to localize Elafin covalently to specific sites on extracellular matrix proteins. It is shown that Elafin can be used as a biomarker for graft versus host disease of the skin. Elafin is expressed in the skin during wound healing through activation of the epidermal growth factor receptor. Elafin may prevent elastase-mediated tissue proteolysis.

For Research Use Only

A Reliable Research Partner in Life Science and Medicine

Toll-free: 1-888-852-8623

Web: www.elabscience.com

Tel: 1-832-243-6086

Email: techsupport@elabscience.com

Fax: 1-832-243-6017